



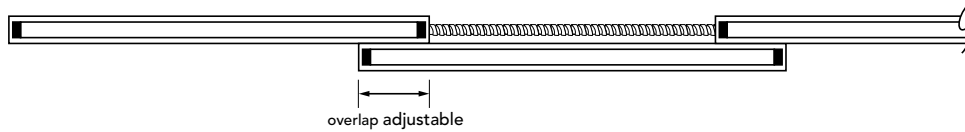
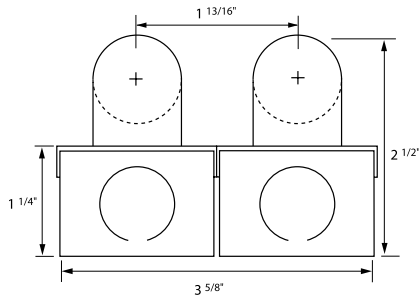
BFL255-S

type: _____

LINEAR T8 FLUORESCENT

Flip and Slide adjustable stagger T8 fluorescent fixture

- SPECIFICATIONS |**
- Fully assembled housing is formed and welded, 20 ga. steel, chemically treated to resist corrosion and enhance paint adhesion
 - Standard finish is high reflectance white powder coat, applied post production
 - Knock-outs accept standard electrical fittings (by others)
 - Available for two T8 17W, 25W or 32W linear fluorescent lamps
 - Adjustable lamp overlap of 3" to 7" (consult factory for other available options)
 - Standard Universal electronic high power factor ballast is pre-wired to the lamp holders
 - Dimming and emergency battery back up options available (**consult factory for availability and system compatibility**)
 - UL and ULC listed for dry and damp locations
 - May be used in conjunction with BFL255 single lamp fixture to terminate runs
 - IBEW



SPECIFICATION / ORDER FORMAT			DIMENSIONAL INFO.	
model no.	voltage	options	lamp	min. - max. length
BFL255-S17	/UNV	Dimming - (consult factory)	2 x 17w T8	*36-13/16" - 44-7/8"
BFL255-S25		/EB - emergency ballast (consult factory)	2 x 25w T8	56-13/16" - 68-7/8"
BFL255-S32		/DL - damp location	2 x 32w T8	80-3/4" - 92-3/4"
		/CU - custom finish (consult factory)		

*NOTE: Some ballasts affect adjustability of this fixture length. (consult factory for overlap capability)

T8
architectural LIGHTING

LENSES | Two-piece system comprised of polycarbonate channel and striated snap-on cover



U8LNP

U8LNCF

Clear fine prismatic acrylic lens with mounting clips (sold by the foot) ___ft.

Frosted acrylic lens with mounting clips (sold by the foot) ___ft.

NOTE: Two lenses required per fixture

TUBE GUARD |

TG

Tube Guard (sold by the foot) ___ft.

NOTE: Two tubes required per fixture

T8

architectural LIGHTING

01.2009