



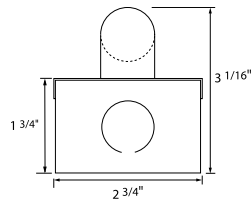
BFLBA-1T

type:

LINEAR T8 FLUORESCENT

T8 fluorescent fixture

- SPECIFICATIONS |**
- Fixture housing optimized for popular, large can dimming ballasts
 - Fully assembled housing is formed and welded, 20 ga. steel, chemically treated to resist corrosion and enhance paint adhesion
 - Standard finish is high reflectance white powder coat, applied post production
 - Knock-outs accept standard electrical fittings (by others)
 - Rotational locking lamp holders
 - Available for one T8 17W, 25W, 32W or 40W linear fluorescent lamp
 - Specified 120V or 277V electronic dimming ballast is pre-wired to the lamp holders (consult factory for other voltage options)
 - Emergency battery back up options available (consult factory for availability and system compatibility)
 - UL and C-UL listed for dry and damp locations



T8
architectural LIGHTING

SPECIFICATION / ORDER FORMAT					DIMENSIONAL INFO.
model no.	lamp position	wattage - lamp	voltage	options	overall length
BFLBA	-1T	17 - 17w T8	/120	Dimming -	24"
		25 - 25w T8	/277	(consult factory or power supply section for catalog number)	36"
		32 - 32w T8	(consult factory for other voltages)	Blank - non-dimming electronic A/C ballast	48"
		40 - 40w T8		Emergency Ballast - (consult factory or power supply section for catalog number)	60"
				/DL - damp location	
				/CU - custom finish	
				(consult factory)	

LENSES | Two-piece system comprised of polycarbonate channel and striated snap-on cover



U8LNP Clear fine prismatic acrylic lens with mounting clips (sold by the foot) ___ft.
 U8LNCF Frosted acrylic lens with mounting clips (sold by the foot) ___ft.

NOTE: lenses fit all models except BFLBA-2T

TUBE GUARD |

TG Tube Guard (sold by the foot) ___ft.

CABLE KIT |

BAC-4N-W Aircraft suspension kit, 4', white
 BAC-4P-W Aircraft suspension kit w/ power feed, 4', white
*custom fixture layout required, consult factory

REFLECTORS | 20 ga. steel construction, white powder coat finish (consult factory for optional reflector materials and finishes)

SYMMETRICAL	for fixture model
BA-1T-R1-17	BFLBA-1T17
BA-1T-R1-25	BFLBA-1T25
BA-1T-R1-32	BFLBA-1T32
BA-1T-R1-40	BFLBA-1T40
BA-2T-R1-17	BFLBA-2T17
BA-2T-R1-25	BFLBA-2T25
BA-2T-R1-32	BFLBA-2T32
BA-2T-R1-40	BFLBA-2T40
ASYMMETRICAL	
BA-1T-R2-17	BFLBA-1T17
BA-1T-R2-25	BFLBA-1T25
BA-1T-R2-32	BFLBA-1T32
BA-1T-R2-40	BFLBA-1T40
BA-2T-R2-17	BFLBA-2T17
BA-2T-R2-25	BFLBA-2T25
BA-2T-R2-32	BFLBA-2T32
BA-2T-R2-40	BFLBA-2T40
INSIDE ASYMMETRICAL	
BA-1T-R3-17	BFLBA-1T17
BA-1T-R3-25	BFLBA-1T25
BA-1T-R3-32	BFLBA-1T32
BA-1T-R3-40	BFLBA-1T40
BA-1S-R4-17	BFLBA-1S17
BA-1S-R4-25	BFLBA-1S25
BA-1S-R4-32	BFLBA-1S32
BA-1S-R4-40	BFLBA-1S40
BA-2T-R3-17	BFLBA-2T17
BA-2T-R3-25	BFLBA-2T25
BA-2T-R3-32	BFLBA-2T32
BA-2T-R3-40	BFLBA-2T40
BA-2S-R5-17	BFLBA-2S17
BA-2S-R5-25	BFLBA-2S25
BA-2S-R5-32	BFLBA-2S32
BA-2S-R5-40	BFLBA-2S40
BA-RA-R4-17	BFLBA-RA17
BA-RA-R4-25	BFLBA-RA25
BA-RA-R4-32	BFLBA-RA32
BA-RA-R4-40	BFLBA-RA40
BA-3S-R5-17	BFLBA-3S17
BA-3S-R5-25	BFLBA-3S25
BA-3S-R5-32	BFLBA-3S32
BA-3S-R5-40	BFLBA-3S40