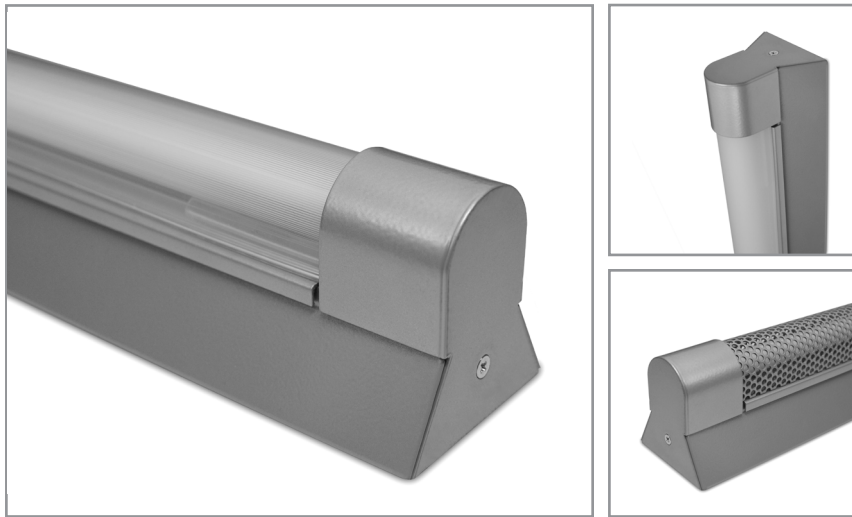


Triangular body, linear T5 fluorescent fixture with lens and decorative end caps

Project: _____ Type: _____



FEATURES

The Elytron Collection features clean, linear fixture bodies and simple decorative caps to conceal the darkness associated with the ends of T5 lamps and sockets. Though kept to a minimum, the profile is still large enough to accept a wide variety of popular ballasts. Multiple lens options are available for this sleek surface mount luminaire.

SPECIFICATIONS

Fully assembled housing is formed and welded, 20 ga. steel, chemically treated to resist corrosion and enhance paint adhesion

Model offered for surface mount applications

Standard finishes include Fluoroscope White (semi-matte), white (semi-gloss), black (semi-matte), matte black, silver, platinum*, bronze and primer powder coat, applied post production (consult factory for custom finishes)

Options include frosted and linear prismatic acrylic lens or perforated steel cover

Available for T5 14W, 21W, 28W, 35W and high output 24W, 39W, 54W, 80W lamps in single, some tandem lengths and continuous runs

Standard ballast is specification grade 120V-277V program start (consult factory for other voltage options)

Dimming, emergency battery backup and specialized ballast factor options available (refer to supplemental ballast details sheet for availability)

Knock outs on rear accept standard electrical fittings by others (consult factory for other locations)

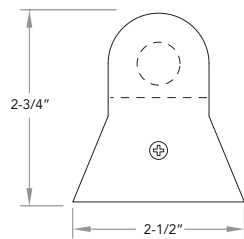
Rotational locking lamp holders

UL and C-UL listed for dry and damp locations

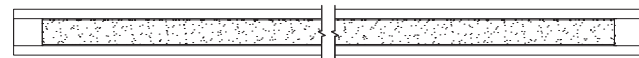
IBEW manufactured and labeled

Made in the U.S.A.

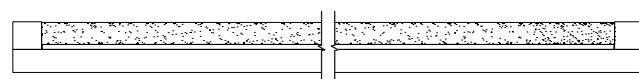
PROFILE



PLAN



SIDE

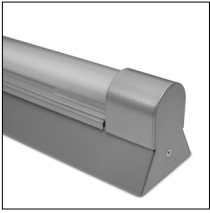
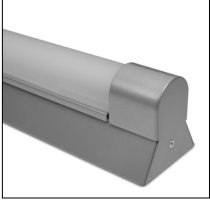
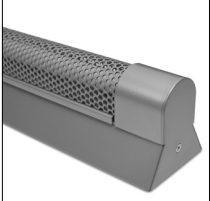


IST5Q +

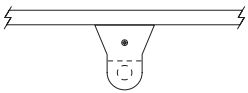
WATTS	VOLTAGE	BALLAST	LENS	MOUNT	FINISH
14: 14W 21: 21W 28: 28W 35: 35W 2121: 2x21W 2828: 2x28W 24: 24W HO 39: 39W HO 54: 54W HO 80: 80W HO 3939: 2x39W HO 5454: 2x54W HO	U: 120V-277V 347: 347V CF: consult factory for specialize voltage [Non-Dimming] PRS: program rapid start [Dimming] MKX: Advance Mark 10 VII: Advance Mark 7 ESYS: Lutron EcoSystem EHD: Lutron EcoSystem H HLM: Lutron Hi-Lume H300: Lutron Hi-Lume 3D PHO: Sylvania Helios DALI: Dali T5 (consult factory) SD95-50: Universal BallaSTAR SD115-50: Universal BallaSTAR	[Custom Performance] PH: 1.15BF program start PN70: 0.70BF program start PN85: 0.85BF program start PN90: 0.90BF program start PN95: 0.95BF program start [Emergency] L50: Bodine LP500 L55: Bodine LP550 L60: Bodine LP600 I28: Iota ISL-28 I54: Iota ISL-54 I540: Iota ISL-540-35W	F: frosted P: linear prismatic Perf: perforated steel cover** SM: surface mount	RUN CONFIGURATION SN: single ST: starter AD: adder TR: terminator	FW: Fluoroscope white (semi-matte) WH: white (semi-gloss) BL: black (semi-matte) MB: matte black SL: silver PT: platinum* BZ: bronze PR: primer CF: consult factory for custom finish

* A standard finish requiring a 2 step coating process, premium will apply
** Additional per foot costs apply

LENS OPTIONS

	ORDERING CODE	DESCRIPTION
	P	Linear prismatic acrylic lens
	F	Frosted acrylic lens
	PERF	Perforated steel cover in matching finish, 9/64" dia. holes on 3/16" centers, 51% open ADDITIONAL PER FOOT COSTS APPLY

MOUNTING

	ORDERING CODE	DESCRIPTION
	SM	SURFACE MOUNT Use appropriate fastener through Ø3/16" holes in housing