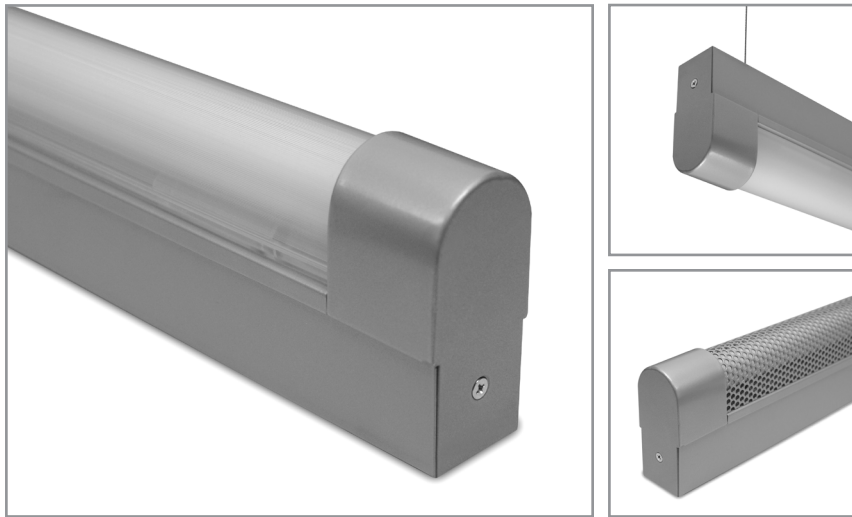


Square Round top, linear T8 fluorescent fixture with lens and decorative end caps

Project: _____ Type: _____



FEATURES

The Elytron Collection features clean, linear fixture bodies and simple decorative caps to conceal the darkness associated with the ends of T8 lamps and sockets. Though kept to a minimum, the profile is still large enough to accept a wide variety of popular ballasts. Multiple lens and three mounting options further broaden the versatility of this sleek luminaire.

SPECIFICATIONS

Fully assembled housing is formed and welded, 20 ga. steel, chemically treated to resist corrosion and enhance paint adhesion

Model variations offered for surface, cable suspended and pendant mount applications

Available in standard white, black, silver, platinum, bronze and primer powder coat, applied post production (consult factory for custom finishes)

Lens options include linear prismatic and frosted acrylic lens or perforated steel cover

Available for T8 17W, 25W, 32W and 40W lamps in single, some tandem lengths and continuous runs

Standard ballast is specification grade 120V-277V instant start (consult factory for other voltage options)

Dimming, emergency battery backup and specialized ballast factor options available (refer to supplemental ballast details sheet for availability)

Knock-outs on back of surface mount model accept standard electrical fittings by others (consult factory for other locations)

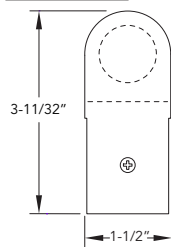
Rotational locking lamp holders

UL and C-UL listed for dry and damp locations

IBEW manufactured and labeled

Made in the U.S.A.

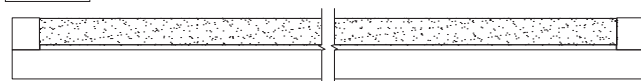
PROFILE



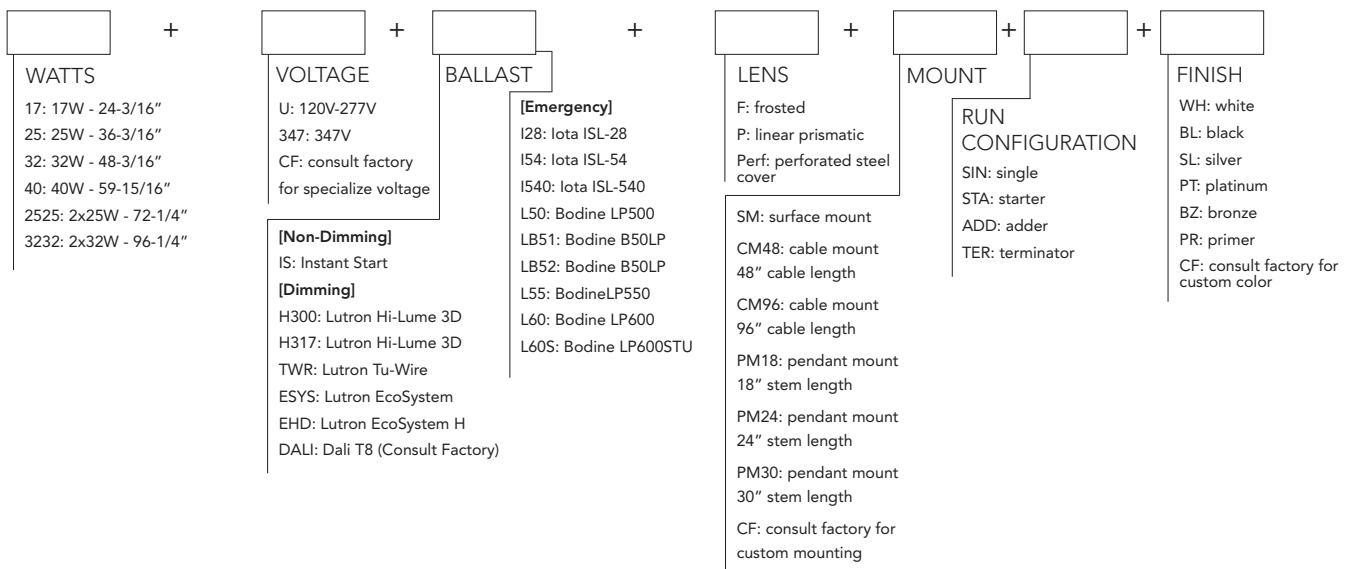
PLAN



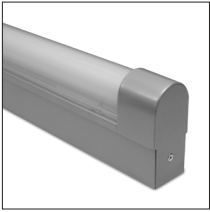
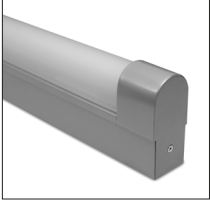

SIDE



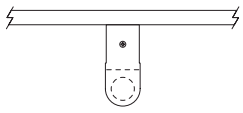
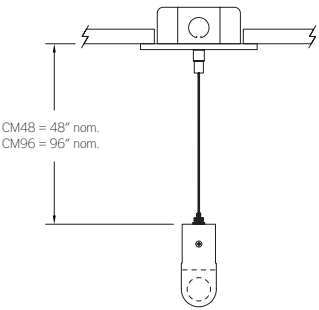
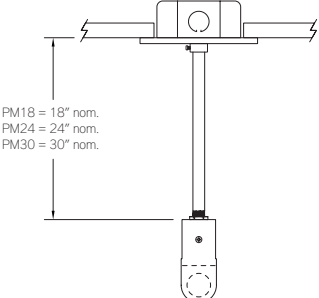
IST8R +



LENS OPTIONS

	ORDERING CODE	DESCRIPTION
	P	Linear prismatic acrylic lens
	F	Frosted acrylic lens
	PERF	Perforated steel cover in matching finish, 9/64" dia. holes on 3/16" staggered centers, 51% open

MOUNTING

	ORDERING CODE	DESCRIPTION
	SM	<p>SURFACE MOUNT</p> <p>Use appropriate fastener through $\varnothing 3/16"$ holes in housing</p>
 <p>CM48 = 48" nom. CM96 = 96" nom.</p>	CM48 and CM96	<p>CABLE MOUNT</p> <p>Mounting option includes:</p> <ul style="list-style-type: none"> • $\varnothing 1/16"$ x 48" (CM48) or 96" (CM96) aircraft cables • 18 gauge x 60" (CM48) or 102" (CM96) SJT power cable (in coordinating finish) • Bracket bars • $\varnothing 5"$ white power feed canopy • $\varnothing 2"$ white canopy • Ceiling couplers • Low profile cable grippers
 <p>PM18 = 18" nom. PM24 = 24" nom. PM30 = 30" nom.</p>	PM18, PM24, PM30	<p>PENDANT MOUNT</p> <p>Mounting option includes:</p> <ul style="list-style-type: none"> • $\varnothing 1/2"$ x 18" (PM18), 24" (PM24) or 30" (PM30) white steel stems • Bracket bars • $\varnothing 5"$ white canopies with integrated slip ring • Hex nuts