

Type:

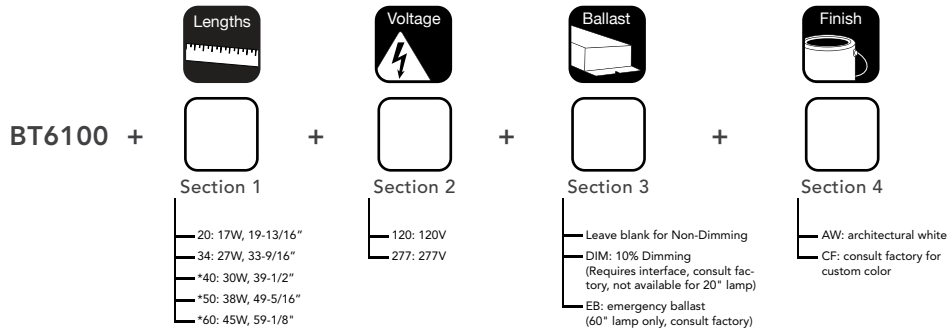


BT6100

BT6100 surface mount linear T6 fluorescent fixture

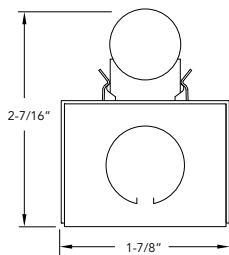


- Fully assembled housing is formed and welded, 20 ga. steel, chemically treated to resist corrosion and enhance paint adhesion
- Standard finish is Fluoroscope White powder coat, applied post production
- Available for one 20", 34", 40", 50" and 60" nominal length linear T6 fluorescent lamp
- Includes electronic 120V or 277V rapid start ballast
- 10% dimming ballast available (requires interface, consult factory for availability and system compatibility)
- Integral emergency ballast available (60" non-dimming only, 1000 lumens, consult factory)
- Knock outs accept standard electrical fittings by others
- Accessory reflectors and lenses available
- Non-dimming fixtures are UL/ULC listed for damp location and through wiring
- Dimming fixtures are UL/ULC listed for dry location and through wiring
- IBEW manufactured and labeled
- Made in U.S.A.

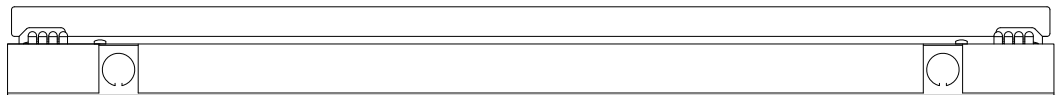


*Wattage rating for non-dimming ballast. When using dimming ballast, add one watt.

Profile



Side View

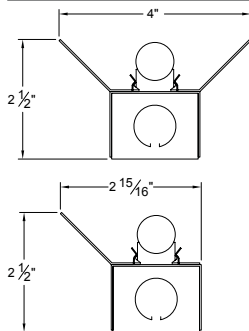


LENSES |



U6LNP	Round Profile	Clear fine prismatic acrylic lens with mounting clips (sold by the foot)	___ft.
U6LNCF	Round Profile	Frosted acrylic lens with mounting clips (sold by the foot)	___ft.
U6LNP-SQ	Square Profile	Clear fine prismatic acrylic lens with mounting clips (sold by the foot)	___ft.
U6LNCF-SQ	Square Profile	Frosted acrylic lens with mounting clips (sold by the foot)	___ft.

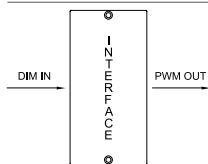
REFLECTORS | 20 ga. steel with white powder coat interior or .020" aluminum in specular (TR=95%) or semi-specular (TR=94%) interior finish



SPECIFICATIONS / ORDER FORMAT

model no.	reflector style	nominal length	interior finish	exterior finish
6100	-R1 - symmetrical	-20	/WH - white	/FW - Fluoroscope white
	-R2 - asymmetrical	-34	/A1 - specular	/CU - custom finish (consult factory)
		-40	/A2 - semi-specular	
		-50		
		-60		

DIMMING INTERFACE | allows simple integration with common dimming control methods, surface mount aluminum enclosure
(see interface cutsheet for complete specifications)



BT-AS-1	Astara PWM interface, 120V, single circuit, 25 fixtures max.
BT-AS-1-277	Astara PWM interface, 277V, single circuit, 25 fixtures max.
BT-AS-3	Astara PWM interface, 120V, three circuit, 60 fixtures max. (3x20 fixtures)
BT-AS-3-277	Astara PWM interface, 277V, three circuit, 60 fixtures max. (3x20 fixtures)