

Type:



- Fully assembled housing is formed and welded, 20 ga. steel, chemically treated to resist corrosion and enhance paint adhesion
- Model variations offered for surface, cable suspended and pendant mount applications
- Please specify whether a fixture is a starter (/STA), an adder (/ADD) or a terminator (/TER) at the end of the order code (see second page)
- Available in standard white, black, silver, platinum, bronze and primer powder coat, applied post production (consult factory for custom finishes)
- Available for two T8 17W, 25W, 32W and 40W linear fluorescent lamps in single and some tandem lengths
- Standard ballast is specification grade 120V-277V program start (consult factory for other voltage options)
- Dimming, emergency battery backup and specialized ballast factor options available (consult factory for availability and system compatibility)
- Knock-outs on back accept standard electrical fittings by others (consult factory for other locations)
- Rotational locking lamp holders
- UL and C-UL listed for dry and damp locations
- IBEW manufactured and labeled
- Made in the U.S.A.

IEL8DS +

 Watts Section 1	+	 Voltage Section 2	+	 Ballast Section 3*	+	 Mount Section 4	+	 Finish Section 5
--	---	--	---	---	---	--	---	---

(2) 17W: 24-1/4"

(2) 25W: 36-1/4"

(2) 32W: 48-1/4"

(2) 40W: 60-1/4"

U: 120V-277V

347: 347V

CF: consult factory for specialize voltage

<p>[Dimming]</p> <p>VII: Mark VII</p> <p>MKX: Mark X</p> <p>ESYS: EcoSystem</p> <p>EHD: EcoSystem H series</p> <p>EHD17: EcoSystem H series</p> <p>ESL: Advance EssentialLine</p> <p>DALI: Dali T8</p> <p>GUV60: GE UltraMax</p> <p>H300: Lutron Hi lume 3D</p> <p>H317: Lutron Hi lume 3D</p> <p>PSNS: Sylvania PowerSense</p> <p>SD118-71: Universal BallasSTAR</p> <p>SD88-50: Universal BallasSTAR</p> <p>TEN: Superdim</p> <p>TWR: Lutron Tu-Wire</p>	<p>[Custom Performance]</p> <p>IH: 1.15BF instant start</p> <p>IL: 1.18BF instant start</p> <p>IN: 0.87BF instant start</p> <p>PH: 1.15BF program start</p> <p>PN: 0.88BF program start</p> <p>PXL: 0.71BF program start</p> <p>PXL60: 0.60BF prgm strt</p>	<p>[Emergency]</p> <p>I28: Iota ISL-28</p> <p>I54: Iota ISL-54</p> <p>I540: Iota ISL-540</p> <p>L40: Bodine LP400</p> <p>L50: Bodine LP500</p> <p>L55: Bodine LP550</p> <p>L60: Bodine LP600</p> <p>L60S: Bodine LP600STU</p> <p>LB51: Bodine B50LP</p> <p>LB52: Bodine B50LP</p> <p>LB61: Bodine B60LP</p> <p>LB62: Bodine B60LP</p> <p>LBU61: Bodine BP60LPU</p> <p>LBU62: Bodine BP60LPU</p>
--	---	---

SM: surface mount

CM48: cable mount 48" cable length

CM96: cable mount 96" cable length

PM18: pendant mount 18" stem length

PM24: pendant mount 24" stem length

PM30: pendant mount 30" stem length

CF: consult factory for custom length

WH: white

BL: black

SL: silver

PT: platinum

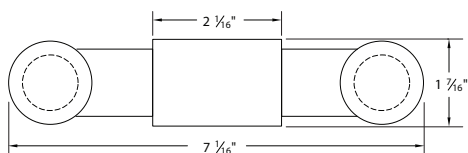
BZ: bronze

PR: primer

CF: consult factory for custom color

*Not all ballasts work with all lamps. Consult factory details.

Profile



Top View

