



## BFL270

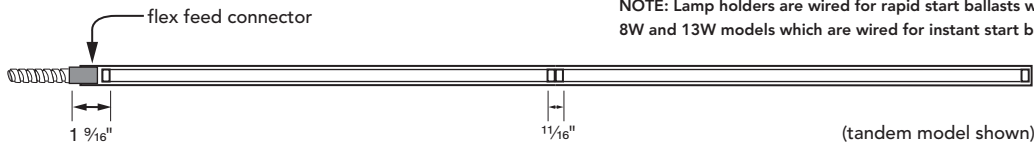
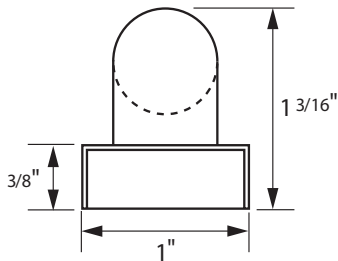
type:

### LINEAR T5 FLUORESCENT

remote ballast T5 fluorescent fixture

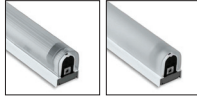
- SPECIFICATIONS |**
- Fully assembled housing is formed, 20 ga. steel, chemically treated to resist corrosion and enhance paint adhesion
  - Standard finish is high reflectance white powder coat, applied post production
  - Rotational locking lamp holders
  - Installed end feed connector accepts 3/8" steel flex conduit (available separately)
  - Wired with 12' leads
  - Easy mounting through provided holes in housing
  - Available for T5 8W, 13W, 14W, 21W, 28W, 35W and high output 24W, 39W, 54W, 80W linear fluorescent lamp in single and tandem lamp models
  - UL and ULC listed for dry and damp locations
  - Approved for use as a light in the storage area of a closet as defined by the 2008 NEC Article 410
  - Tube guard or lens recommended for use in closet applications
  - IBEW
  - Requires a remote ballast and enclosure (ordered separately)

**NOTE:** Lamp holders are wired for rapid start ballasts with the exception of 8W and 13W models which are wired for instant start ballasts.



SPECIFICATION / ORDER FORMAT		DIMENSIONAL INFO.	
model no.	options	lamp	overall length
BFL270-8	/DL - damp location	8w T5	13-3/8"
BFL270-13	/CU - finish (consult factory)	13w T5	22-7/16"
BFL270-14/RS		14w T5	23-11/16"
BFL270-21/RS		21w T5	35-1/2"
BFL270-28/RS		28w T5	47-1/4"
BFL270-35/RS		35w T5	59-1/8"
BFL270-1414/RS		2 x 14w T5	46-1/16"
BFL270-2121/RS		2 x 21w T5	69-5/8"
BFL270-2828/RS		2 x 28w T5	93-3/8"
BFL270-24/RS		24w T5 HO	23-11/16"
BFL270-39/RS		39w T5 HO	35-1/2"
BFL270-54/RS		54w T5 HO	47-1/4"
BFL270-80/RS		80w T5 HO	59-1/8"
BFL270-2424/RS		2 x 24w T5 HO	46-1/16"
BFL270-3939/RS		2 x 39w T5 HO	69-5/8"
BFL270-5454/RS		2 x 54w T5 HO	93-3/8"

**LENSES** | Two-piece system comprised of polycarbonate channel and striated snap-on cover



U5LNP Clear fine prismatic acrylic lens with mounting clips (sold by the foot) \_\_\_ft.  
 U5LNCF Frosted acrylic lens with mounting clips (sold by the foot) \_\_\_ft.

**TUBE GUARD** |

Tube Guard (sold by the foot) \_\_\_ft.

**REFLECTORS** | 20 ga. steel construction, white powder coat finish (consult factory for optional reflector materials and finishes)

**SYMMETRICAL**

270-R1-8  
 270-R1-13  
 270-R1-14/24  
 270-R1-21/39  
 270-R1-28/54  
 270-R1-35/80

**for fixture models**

BFL270-8  
 BFL270-13  
 BFL270-14            BFL270-24  
 BFL270-21           BFL270-39  
 BFL270-28           BFL270-54  
 BFL270-35           BFL270-80

**ASYMMETRICAL**

270-R2-8  
 270-R2-13  
 270-R2-14/24  
 270-R2-21/39  
 270-R2-28/54  
 270-R2-35/80

BFL270-8  
 BFL270-13  
 BFL270-14           BFL270-24  
 BFL270-21           BFL270-39  
 BFL270-28           BFL270-54  
 BFL270-35           BFL270-80

**INSIDE ASYMMETRICAL**

270-R3-8  
 270-R3-13  
 270-R3-14/24  
 270-R3-21/39  
 270-R3-28/54  
 270-R3-35/80

BFL270-8  
 BFL270-13  
 BFL270-14           BFL270-24  
 BFL270-21           BFL270-39  
 BFL270-28           BFL270-54  
 BFL270-35           BFL270-80

T5

architectural LIGHTING

05.2015