



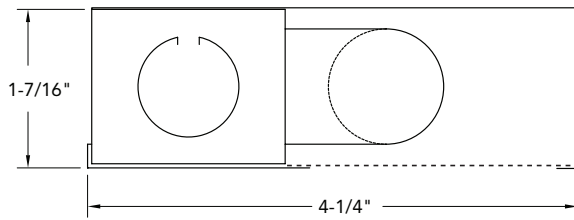
MiT8-1S-UC

type:

LINEAR T8 FLUORESCENT

low profile under cabinet T8 fluorescent fixture

- SPECIFICATIONS |**
- Fully assembled housing is formed and welded, 20 ga. steel, chemically treated to resist corrosion and enhance paint adhesion
 - Standard finish is high reflectance white powder coat, applied post production
 - Knock-outs accept standard electrical fittings (by others)
 - Rotational locking lamp holders
 - Available for T8 17W, 25W, 32W or 40W linear fluorescent lamps
 - 120V - 277V options
 - Lay-in lens
 - UL and C-UL listed for dry and damp locations
 - IBEW manufactured and labeled
 - Made in the U.S.A.



T8
architectural LIGHTING

SPECIFICATION / ORDER FORMAT					DIMENSIONAL INFO.
model no.	wattage - lamp	voltage	options	lens	overall length
MiT8-1S-UC	17 - 17w T8	/UNV - 120V-277V	/SW - rocker switch	CL - clear	24"
	25 - 25w T8		/DL - damp location	FR - frosted	36"
	32 - 32w T8		/OCC - occupancy sensor	PR - prismatic	48"
	40 - 40w T8		/PCW3 - 3ft White Pow-	WH - white	60"
			/OUT - NEMA 5-15 Recep-		
			/CU - custom finish <small>(consult</small>		