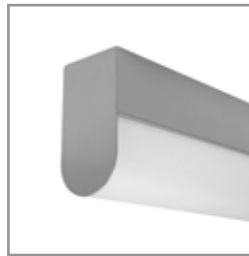


BLT210 | GENERAL INFORMATION

2-1/8" wide steel rectilinear LED fixture with drop down lens



Project: _____ Type: _____



FEATURES

The BLT210 luminaire provides high performance with high value. The heavy gauge, sheet formed 2-1/8" wide steel housing is offered with rectangular or round profile frosted acrylic lenses and 90+ CRI LEDs. Multiple driver, light output and mounting options enable this basic linear fixture to provide great versatility in applications.

SPECIFICATIONS

Housing is formed and welded, 20 ga. steel, chemically treated to resist corrosion and enhance paint adhesion

Model variations offered in rectangular or rounded profiles for surface and cable suspended applications

Standard finishes as shown below

Available as single fixtures in nominal lengths of 2'-8"

Surface mount models include knock outs on the rear and surface or suspended models are available with optional end knock outs.

Standard integral 120-277V driver offered with 0-10V dimming or non-dim (other dimming driver options available)

Integral 120-277V emergency battery backup available for 4' nominal non-dim or 0-10V (consult factory for all other lengths/ drivers)

Standard light outputs are 600 or 800 lumens per foot

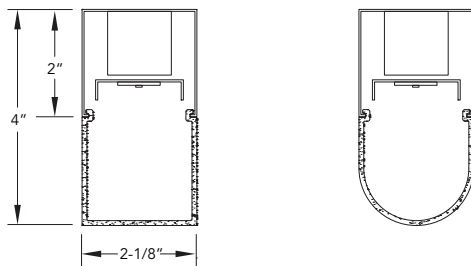
LEDs available in 2700K, 3000K, 3500K, and 4000K, within a 3 step MacAdam ellipse, all with 90+ CRI typical

Life: 50,000 hours L₇₀

Passive infrared occupancy sensor available (FOR RECTANGULAR PROFILE ONLY)

Limited five year warranty

SECTION



PERFORMANCE

NOMINAL LENGTH	OUTPUT	LUMENS/ft.	WATTS/ft.	LUMINAIRE LUMENS	EFFICACY (LPW)
4'	L: low	600	5.7	2256	107
	R: regular	800	7.9	2930	101


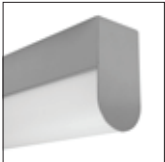
*Note: All data reflects fixtures with 3500K LEDs and rectangular profile



BLT210 -

NOMINAL FIXTURE LENGTH	CORRELATED COLOR TEMPERATURE	DRIVER	LENS	OPTIONS	MOUNT	FINISH
2: 22-5/16"	27: 2700K-90+ CRI	[Non-Dimming] leave blank for non-dimming	A: rectangular lens profile B: round lens profile	EK: add end knock-outs ED: emergency driver (4' nom. non-dim or 0-10V only)	SM: surface mount C4: cable mount 4' cable length C8: cable mount 8' cable length CF: consult factory for custom mounting	AW: architectural white (semi-matte) WH: white (semi-gloss) BL: black (semi-matte) MB: matte black ESS: environmental satin silver BZ: bronze PR: primer CF: consult factory for custom finish
3: 33-5/16"	30: 3000K-90+ CRI	[Dimming] D: 0-10V, 1% HE: Lutron EcoSystem, 1% HES: Lutron EcoSystem, soft-on/fade-to-black, 1% H2: Lutron Hi-lume 2-wire forward phase, 1%, (120V ONLY) E5: Lutron EcoSystem 5-Series, 5% EL: eldoLED ECOdrive, 0-10V, 1%	LIGHT OUTPUT (lumens per foot) L: low - 600 R: regular - 800 CF: consult factory for custom output	S1: occ sensor pos.1 (see options section) S2: occ sensor pos.2 (see options section) S3: occ sensor pos.3 (see options section)		
4: 44-5/16"	35: 3500K-90+ CRI					
5: 55-5/16"	40: 4000K-90+ CRI					
6: 66-5/16"						
7: 77-5/16"						
8: 88-5/16"						

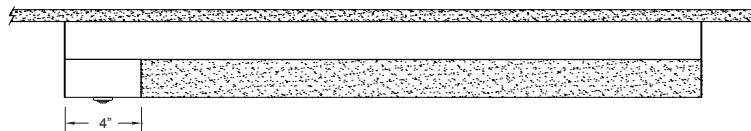
LENS

ORDERING CODE	DESCRIPTION	SPECIFICATIONS
	A RECTANGULAR ACRYLIC	Frosted acrylic extrusion with rectangular profile
	B ROUNDED ACRYLIC	Frosted acrylic extrusion with rounded profile

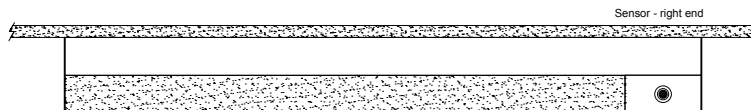
OPTIONS

ORDERING CODE	DESCRIPTION	SPECIFICATIONS
EK	ADD END KNOCK OUTS	Ø 7/8" knock outs added at both fixture ends
ED	EMERGENCY LED DRIVER	<ul style="list-style-type: none"> • Universal 120-277V input voltage emergency driver delivers initial minimum power of 10W for 90 minutes • Available for 4' nominal length non-dim or 0-10V fixture only (consult factory for all other lengths/drivers)

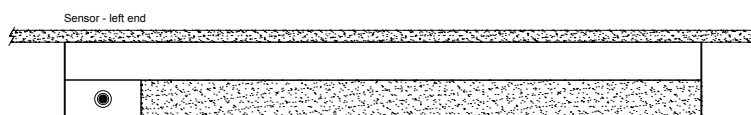
ORDERING CODE	DESCRIPTION	SPECIFICATIONS
	OCCUPANCY SENSOR	Passive infrared occupancy sensor with hold-off daylighting adjustment (10-120 foot candles) and time delay adjustment from 30 seconds to 30 minutes AVAILABLE FOR RECTANGULAR PROFILE ONLY
S1	OCCUPANCY SENSOR - POSITION 1	Sensor adds 4" to overall fixture length Sensor located on the top at an end



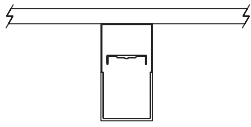
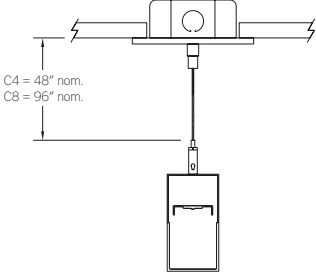
S2	OCCUPANCY SENSOR - POSITION 2	Sensor located on the side at the right end
----	-------------------------------	--



S3	OCCUPANCY SENSOR - POSITION 3	Sensor located on the side at the left end
----	-------------------------------	---



MOUNTING

	ORDERING CODE	DESCRIPTION
	SM	<p>SURFACE MOUNT</p> <p>Use appropriate fastener through Ø3/16" holes in housing</p>
 <p>C4 = 48" nom. C8 = 96" nom.</p>	C4 and C8	<p>CABLE MOUNT</p> <p>Mounting option includes:</p> <ul style="list-style-type: none"> • Ø 1/16"x 48" (C4) or 96" (C8) aircraft cables • 60" (C4) or 108" (C8) power cable in coordinating finish • Bracket bars • Ø 5" white canopies • Ceiling couplers • Side exit cable grippers