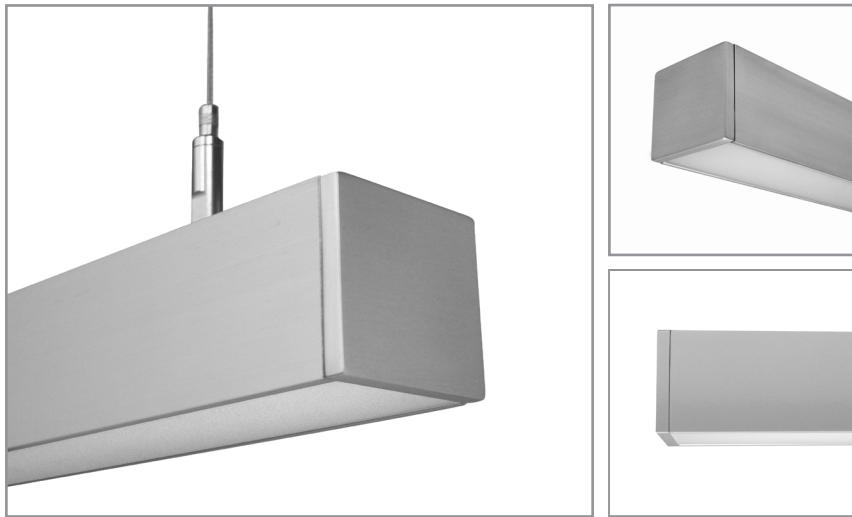


# BSS225 | BODHI GENERAL INFORMATION



2-1/8" wide rectilinear LED fixture with flat lens for remote driver operation

Project: \_\_\_\_\_ Type: \_\_\_\_\_



## FEATURES

The BSS225 is a low profile, remote driven, linear LED luminaire for general lighting applications. The 2" tall by 2-1/8" wide extruded aluminum housing is capped with a flat, frosted lens. 1/4" thick machined aluminum end caps finish off the fixture ends.

## SPECIFICATIONS

Fixture constructed of an extruded aluminum housing, extruded, frosted acrylic lens and machined aluminum end caps

Model variations offered for surface or cable suspended applications and with wide or narrow light distributions

Field adjustable cable hangers can be located at nearly any point along the fixture length

Standard finishes as shown below

Available in nominal lengths of 2'-8' as single fixtures and continuous runs

Surface mount fixtures wired with 10' low voltage leads

Included standard remote 120-277V driver offered with 0-10V dimming or non-dim (other dimming driver options available)

Remote mounted emergency battery backup available (ordered separately, consult factory for details)

Standard outputs are 500, 650 and 850 lumens per foot

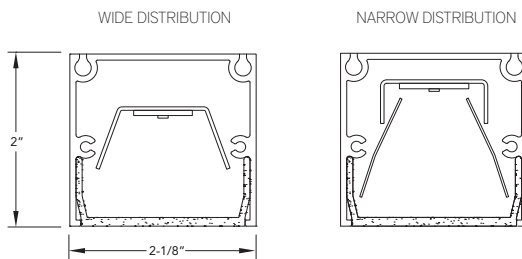
LEDs available in 2700K, 3000K, 3500K, and 4000K, within a 3 step MacAdam ellipse, all with 90+ CRI typical

Life: 50,000 hours L<sub>70</sub>

UL and C-UL listed for dry and damp locations

Limited five year warranty

## SECTION



## PERFORMANCE

| NOMINAL LENGTH | OUTPUT     | LUMENS/ft. | WATTS/ft. | LUMINAIRE LUMENS | EFFICACY (LPW) |
|----------------|------------|------------|-----------|------------------|----------------|
| 4'             | L: low     | 500        | 5.5       | 1874             | 91             |
|                | R: regular | 650        | 7.6       | 2434             | 85             |
|                | H: high    | 850        | 10.6      | 3198             | 81             |

\*Note: All data reflects fixtures with 3500K LEDs and wide light distribution



## BSS225 -

| NOMINAL FIXTURE LENGTH* | CORRELATED COLOR TEMPERATURE | DRIVER   | LIGHT DISTRIBUTION                    | RUN CONFIGURATION                       | FINISH   |
|-------------------------|------------------------------|--|---------------------------------------|---|--|
| 2: 23"                  | 27:2700K - 90+ CRI           | ND: non-dimming<br>[Dimming]                             | W: wide<br>N: narrow                  | SN: single                              | AW: architectural white (semi-matte)                 |
| 3: 34"                  | 30: 3000K - 90+ CRI          | D: 0-10V, 1%   |                                       | ST: starter                             | WH: white (semi-gloss)                               |
| 4: 45"                  | 35: 3500K - 90+ CRI          | HE: Lutron EcoSystem, 1%                                 | LIGHT OUTPUT (lumens per foot)        | AD: adder                               | BL: black (semi-matte)                               |
| 5: 56"                  | 40: 4000K - 90+ CRI          | HES: Lutron EcoSystem, soft-on/fade-to-black, 1%         | L: low - 500                          | TR: terminator                          | MB: matte black                                      |
| 6: 67"                  |                              | H2: Lutron Hi-lume 2-wire forward phase, 1%, (120V ONLY) | R: regular - 650                      |   | ESS: environmental satin silver                      |
| 7: 78"                  |                              | E5: Lutron EcoSystem 5-Series, 5%                        | H: high - 850                         |   | BZ: bronze   |
| 8: 89"                  |                              | EL: eldoLED ECOdrive, 0-10V, 1%                          | CF: consult factory for custom output |   | PR: primer   |
|                         |                              |  |                                       | MOUNT                                   | CF: consult factory for custom finish                |
|                         |                              |  |                                       | SM: surface mount                       | SA: satin anodize (may require additional lead time) |
|                         |                              |  |                                       | C4: cable mount 4' cable length         |  |
|                         |                              |  |                                       | C8: cable mount 8' cable length         |  |
|                         |                              |  |                                       | CF: consult factory for custom mounting |  |

\* Actual dimension dependent on run configuration

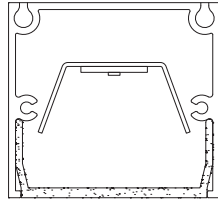
Note: Each fixture includes a remote driver matched for fixture length and light output.

©2019 Bartco Lighting, Inc. These products are protected by patents and patents pending. Unauthorized use or reproduction of illustrations, photographs or text is prohibited. Bartco Lighting reserves the right to discontinue products or to change the technical and/or design specifications at any time.

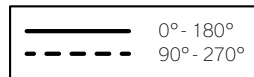
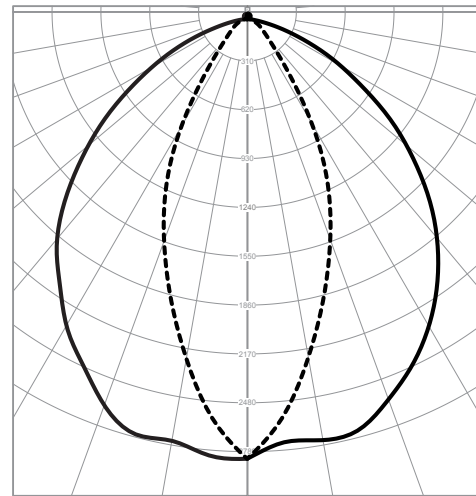
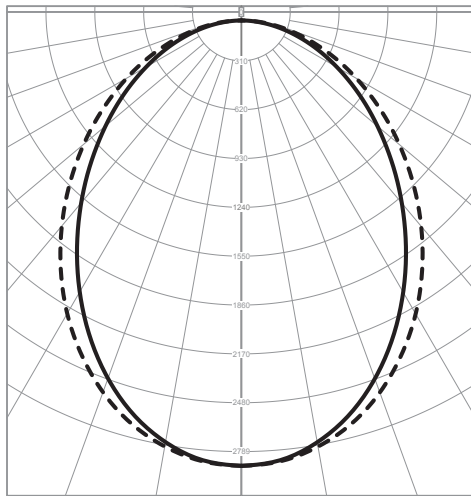
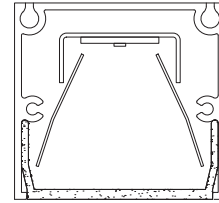
LIGHT DISTRIBUTION

Consult photometry files on website for detailed information

WIDE DISTRIBUTION



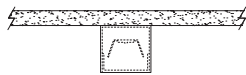
NARROW DISTRIBUTION



MOUNTING

SM

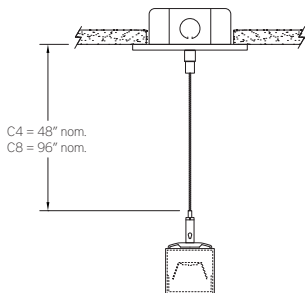
SURFACE MOUNT



- Use appropriate fastener through Ø3/16" holes in housing
- 10' low voltage leads exit out the rear at an end

C4 and C8

CABLE MOUNT



Mounting option includes:

- Extruded aluminum cable hanger bracket (can be located at any at nearly any point along the fixture length)
- Ø 1/16" x 48" (C4) or 96" (C8) aircraft cables
- 18 gauge x 60" (C4) or 108" (C8) power cable (in coordinating finish)
- Bracket bars
- Ø 5" white canopies
- Ceiling couplers
- Side exit cable grippers