

## LENGTH / MOUNTING DIMENSIONS

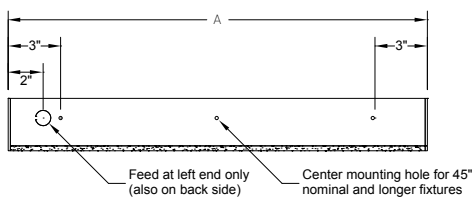
## RUN CONFIGURATION INFORMATION

ORDERING CODE	LENGTH A	LENGTH B	LENGTH C	LENGTH D	LENGTH E
2	22-5/8"	22-3/8"	22-1/8"	16-5/8"	19-3/8"
3	33-5/8"	33-7/16"	33-3/16"	27-5/8"	30-7/16"
4	44-11/16"	44-1/2"	44-1/4"	38-11/16"	41-1/2"
5	55-3/4"	55-9/16"	55-5/16"	49-3/4"	52-9/16"
6	66-13/16"	66-5/8"	66-3/8"	60-13/16"	63-5/8"
7	77-7/8"	77-11/16"	77-7/16"	71-7/8"	74-11/16"
8	88-15/16"	88-3/4"	88-1/2"	82-15/16"	85-3/4"

ORDERING CODE	DESCRIPTION
SN	Single
ST	Starter
AD	Adder
TR	Terminator

## RUN INFORMATION

Top View - Surface Mount Single Fixture Option

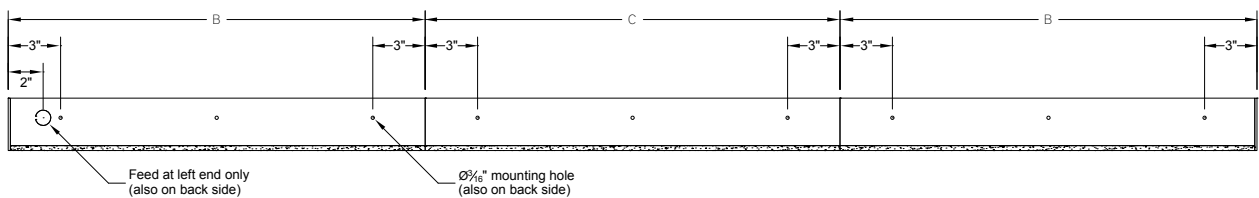


Front View - Surface Mount Single Fixture Option



SN

Top View - Surface Mount Continuous Fixture Option



Front View - Surface Mount Continuous Fixture Option

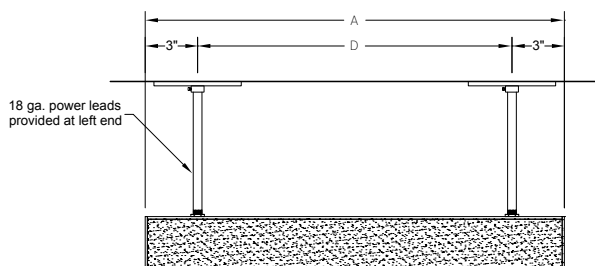


ST

AD

TR

Side View - Pendant Mount Single Fixture Option



SN

RUN INFORMATION

Side View - Pendant Mount Continuous Fixture Option

