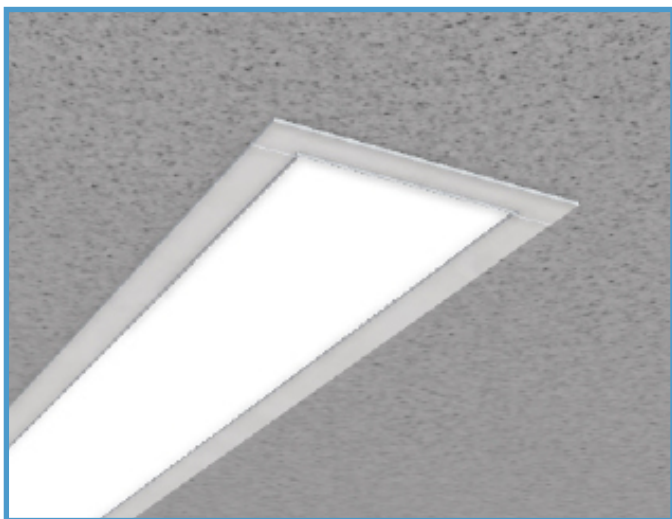


# BSS440 | WAKE™ RECESSED SLOT LED

Narrow, extruded aluminum, 4" aperture, recessed slot, LED light



Project: \_\_\_\_\_ Type: \_\_\_\_\_



## FEATURES

A member of the Wake series, the BSS440 is a recessed, extruded aluminum linear LED luminaire with 4" wide aperture. Single and continuous run fixtures are available for installation in common grid ceilings or in hard walls and ceilings with flange and trimless variants. Flush or 1" drop frosted acrylic lens options are offered for all mounting configurations.

## SPECIFICATIONS

Fixture housing and trim elements made of extruded aluminum and 16 ga. sheet aluminum and steel parts

Model options available for typical 9/16" and 15/16" grid ceilings or hard walls/ceilings with flange and trimless mounting (wall installation requires accessory mounting brackets)

Basic continuous run fixtures provided with 18 ga. wiring harness for 6 Amp maximum load (consult factory for runs requiring multiple circuits, sensor integration, etc.)

Frosted acrylic lens options include a flush fit or 1" drop style with lensed ends

Standard integral 120-277V driver offered with 0-10V dimming or non-dim (other dimming driver options available)

Integral 120-277V emergency battery backup available for 44"-88" fixtures (supplied with remote test switch/indicator plate assembly)

Standard light outputs range from 465 – 905 lumens per foot

LEDs available in 2700K, 3000K, 3500K, and 4000K, within a 3 step MacAdam ellipse, all with 90+ CRI typical

Life: 50,000 hours L<sub>70</sub>

Chicago plenum rated option available

Nominal weight is 3.4 lbs. per foot

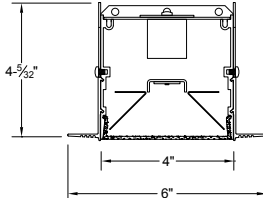
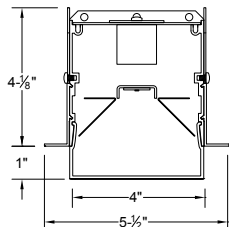
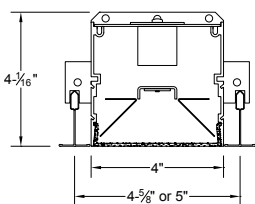
Limited five year warranty

## SECTIONS

T1: T-grid 9/16"  
T2: T-grid 15/16"  
(flush lens option shown)

FT: Flange  
(drop lens option shown)

TL: Trimless  
(flush lens option shown)



## PERFORMANCE

NOMINAL LENGTH	OPTIC CONFIGURATION	OUTPUT	LUMENS/ft.	WATTS/ft.	LUMINAIRE LUMENS	EFFICACY (LPW)
44"	FLUSH	L: low	465	5.7	1733	82
		R: regular	685	7.8	2550	77
		H: high	795	10.9	2957	73
	DROP	L: low	530	5.7	1980	94
		R: regular	690	7.8	2571	88
		H: high	905	10.9	3378	83

Note: All data reflects fixtures with 3500K LEDs



## BSS440 -

<b>MOUNTING</b> T1: T-grid 9/16" T2: T-grid 15/16" FT: Flange trim TL: Trimless CF: consult factory for custom mounting	<b>NOMINAL FIXTURE LENGTH**</b> 22: 22" 24: 24" (T1 or T2 w/SN ONLY) 33: 33" 39: 39" 44: 44" 48: 48" (T1 or T2 w/SN ONLY) 50: 50" 55: 55"	<b>CORRELATED COLOR TEMPERATURE</b> 27: 2700K-90+ CRI 30: 3000K-90+ CRI 35: 3500K-90+ CRI 40: 4000K-90+ CRI	<b>DRIVER</b> ND: non-dimming <b>[Dimming]</b> D: 0-10V, 1% HE: Lutron EcoSystem, 1% HES: Lutron EcoSystem, soft-on/fade-to-black, 1% H2: Lutron Hi-lume 2-wire forward phase, 1%, (120V ONLY) E5: Lutron EcoSystem 5-Series, 5% EL: eldoLED ECOdrive 0-10V, 1%	<b>LIGHT OUTPUT (lumens per foot w/drop lens) *</b> L: low - 530 R: regular - 690 H: high - 905 CF: consult factory for custom output	<b>RUN CONFIGURATION</b> SN: single ST: starter AD: adder TR: terminator	<b>OPTIONS</b> CP: Chicago plenum ED: emergency driver (44"-88" fixtures) WS1: Wattstopper FS-205 ‡ ES1: EasySense SN102 ‡ ES2: EasySense SN200 ‡ ES3: EasySense SN300 ‡ EN1: Enlighted FS-D22 ‡ CF: consult factory for custom finish
					<b>LENS</b> F1: frosted flush F2: frosted drop	

\*\* Actual dimension dependent on mounting option and run configuration

\* Output for drop lens option. Consult performance table for all output options.

\*\* Actual dimension dependent on mounting option and run configuration

‡ See sensor section for driver compatibility information

## MOUNTING

ORDERING CODE

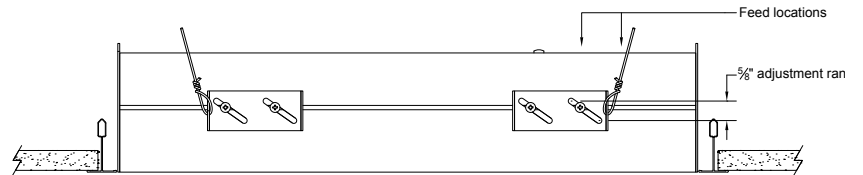
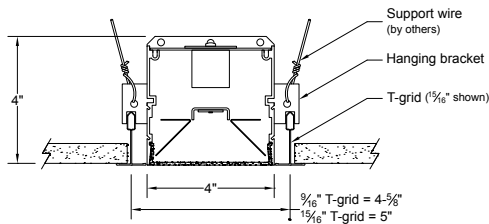
DESCRIPTION

SPECIFICATIONS

T1  
T2

T-grid ceiling 9/16"  
T-grid ceiling 15/16"

- 16 ga. brackets locate housing onto T-bar and allow 5/8" of vertical adjustment to accommodate various height T-bar
- Housing secured with support wires (by others)
- Exposed flange trim in matte white finish

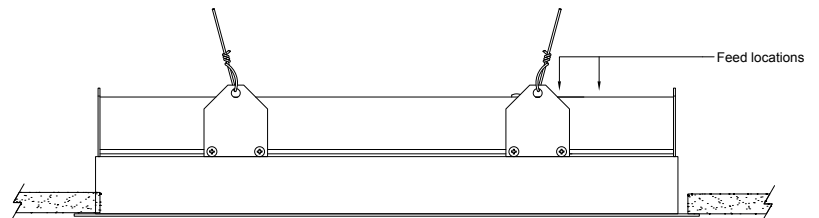
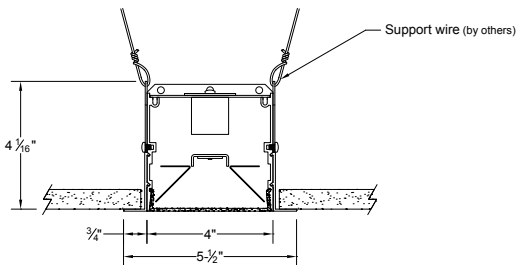


FT

Flange - drywall ceiling or wall

- **For wall installations or special ceiling conditions, order accessory mounting brackets 430-WB**

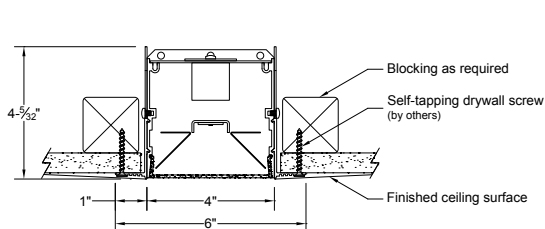
- 3/4" wide extruded aluminum trim flange in matte white finish
- Housing secured with support wires or 1/4-20 threaded rod (by others)




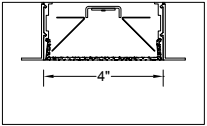

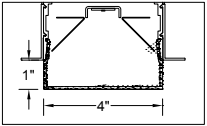
TL

Trimless - drywall ceiling or wall


- Installs after 1/2" or 5/8" drywall
- Housing secured with self-tapping drywall screws (by others) into blocking as required



## LENS OPTIONS

	ORDERING CODE	DESCRIPTION	SPECIFICATIONS	
	F1	FROSTED FLUSH LENS	4" W frosted acrylic extrusion	
	F2	FROSTED DROP LENS	4" W x 1" H frosted acrylic extrusion with matching acrylic end caps	




## OPTIONS

	ORDERING CODE	DESCRIPTION	SPECIFICATIONS
	ED	EMERGENCY LED DRIVER	<ul style="list-style-type: none"> <li>• Universal 120-277V input voltage emergency driver delivers initial minimum power of 10W for 90 minutes</li> <li>• Available for 44-88" fixtures</li> <li>• Provided with combination test switch/indicator light mounted to wall plate for remote installation</li> </ul>

Note: remote battery backup available for shorter fixture lengths - ordered separately, consult factory for details

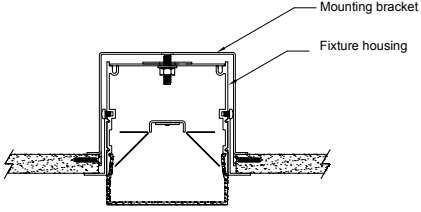
## INTEGRATED SENSORS

Note: Overall fixture length remains the same as models without a sensor. Total illuminated length is reduced by 5" nominal. For F1 flush lens option, sensors are mounted to flush filler piece. For F2 drop lens option, sensors are mounted to 1" H sheet formed cover.

	ORDERING CODE	BRAND AND MODEL	FUNCTIONS	
	WS1	Wattstopper FS-205	Occupancy and light level sensor	For use with on/off or 0-10V dimming drivers only
	EN1	Enlighted FS-D22	Occupancy, ambient light sensing, daylight harvesting, and environment monitoring for Enlighted control network	Provided with Advance sensor ready series 0-10V dimming drivers
	ES1	Philips EasySense SN102	Occupancy, daylight harvesting and task tuning sensor with simple grouping	Provided with Advance sensor ready series 0-10V dimming drivers
	ES2	Philips EasySense SN200	Occupancy, daylight harvesting and task tuning sensor with advance grouping	Provided with Advance sensor ready series 0-10V dimming drivers
	ES3	Philips EasySense SN300	Occupancy, daylight harvesting sensor for integration with Zigbee control networks	Provided with Advance sensor ready series 0-10V dimming drivers

ACCESSORIES

Note: Accessories sold separately

	ORDERING CODE	DESCRIPTION	SPECIFICATIONS
	440-WB	WALL MOUNT BRACKET	<ul style="list-style-type: none"> <li>• For use when mounting fixtures with flange or trimless options in walls or restricted ceiling conditions</li> <li>• 16 ga. bracket clamps fixture to the backside of the mounting surface with provided hardware</li> <li>• Sold individually; <b>two</b> required for 22-61" nom. fixtures, <b>three</b> required for 66-88" nom. fixtures</li> </ul>