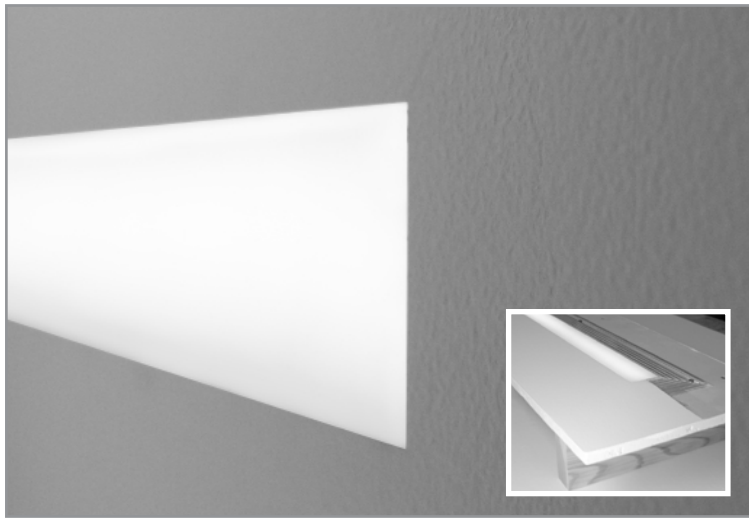


# BIW110 | GENERAL INFORMATION

Linear LED fixture for flush mounting in 5/8" drywall, with integral driver

Project: \_\_\_\_\_ Type: \_\_\_\_\_



## FEATURES

The In-Wall miniature profile LED luminaire flush mounts into finished 5/8" thick drywall without disturbing wall or ceiling framing, to create 2" wide bands of continuous light. Single fixtures up to 8' nominal or continuous runs attach directly to installed drywall and framing and are finished out with joint compound and paint. The field installed integral driver housing fits between 16" on-center studs.

## SPECIFICATIONS

Fixture constructed of extruded aluminum frame sides, 20 gauge steel and aluminum end plates, joining components and reflectors and 2" wide frosted acrylic lens

Available in nominal 24"-96" lengths in 3" increments as single fixtures and continuous runs

Single fixtures and runs can be flush mounted on all sides within a single plane or butt up to an adjacent plane

LED module/reflector assembly accessed and serviced through the fixture aperture

Standard constant voltage driver offered with 0-10V dimming or non-dim and with integral or remote mount options

Integral driver option ensures there are no issues with voltage drop across the length of the fixture run

Driver housing designed to fit within 16" on center wall studs and can be positioned in the field

Frosted acrylic lens segments are provided longer than required and trimmed to fit in the field (lens quantities lengths and joints for a given run will be optimized in the shop drawing phase)

Standard output is 500 lumens per foot

LEDs available in 2700K, 3000K, 3500K, and 4000K, within a 3 step MacAdam ellipse, all with 80+ CRI typical

LED life rated at 50,000 hours

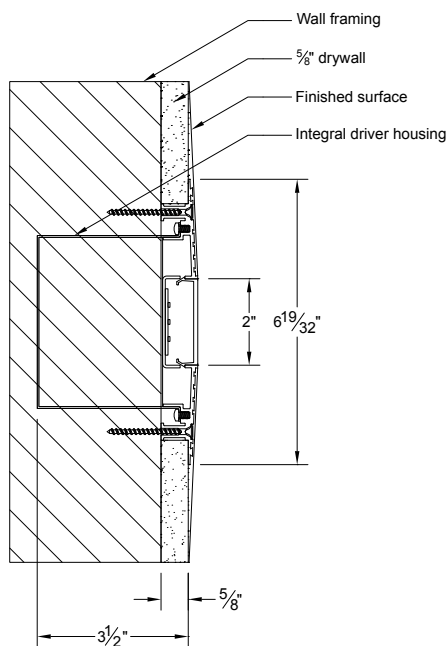
Limited five year warranty

UL and C-UL listed for dry and damp locations and I.C. rated

IBEW manufactured and assembled

**MADE IN U.S.A.**

## SECTION



## PERFORMANCE

NOMINAL LENGTH	LUMENS/ft.	WATTS/ft.	LUMINAIRE LUMENS	EFFICACY (LPW)
48"	500	6.4	1978	69

\*Note: All data reflects fixtures with 3500K LEDs

## BIW110 +

SHAPE	RUN CONFIGURATION*	CONFIGURATION OPTION*	LENGTH**	COLOR TEMPERATURE	VOLTAGE	DRIVER	LIGHT OUTPUT (lumens per foot)
L: straight	SN: single ST: starter AD: adder TR: terminator	A, B, C A, B A A, B	24-1/8" to 96-1/8" nominal in 3" increments	27: 2700K - 80+ CRI 30: 3000K - 80+ CRI 35: 3500K - 80+ CRI 40: 4000K - 80+ CRI	120: 120V 277: 277V	L: integral non-dimming IDM: integral dimming, 0-10V, 10% R: remote non-dimming RDM: remote dimming, 0-10V, 10%	R: Regular: 500

\* Consult configuration option chart on following page to verify availability of run configuration/option  
\*\* Actual dimension dependent on run configuration and option

## RUN CONFIGURATION INFORMATION

ORDERING CODE	DESCRIPTION
SN	Single
ST	Starter
AD	Adder
TR	Terminator

## OVERALL LENGTH DIMENSIONS

Fixtures are available in base overall lengths of 24-1/8" to 96-1/8" in three inch increments (24-1/8", 27-1/8", 30-1/8" ...)

**NOTE: See configuration options drawings below to determine the applicable length adder for a given fixture.**

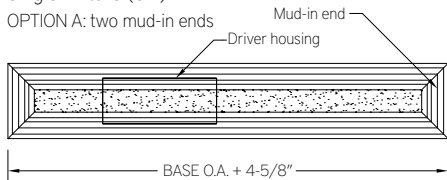
ORDER CODE	BASE O.A. LENGTH	ORDER CODE	BASE O.A. LENGTH	ORDER CODE	BASE O.A. LENGTH
24	24-1/8"	51	51-1/8"	75	75-1/8"
27	27-1/8"	54	54-1/8"	78	78-1/8"
30	30-1/8"	57	57-1/8"	81	81-1/8"
33	33-1/8"	60	60-1/8"	84	84-1/8"
36	36-1/8"	63	63-1/8"	87	87-1/8"
39	39-1/8"	66	66-1/8"	90	90-1/8"
42	42-1/8"	69	69-1/8"	93	93-1/8"
45	45-1/8"	72	72-1/8"	96	96-1/8"
48	48-1/8"				

## CONFIGURATION OPTIONS

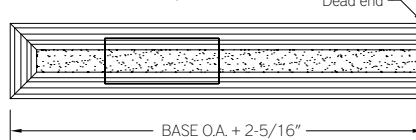
NOTE: For best flush appearance with the mounting surface, allow at least 2-1/2" beyond the sides and mud-in end plates.

### Single Fixture (SN)

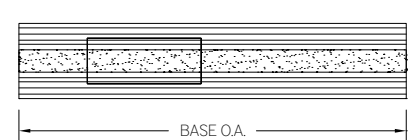
OPTION A: two mud-in ends



OPTION B: one mud-in, one dead end

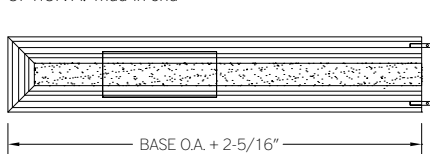


OPTION C: two dead ends

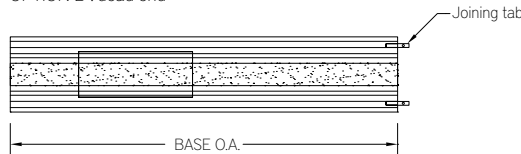


### Starter Fixture (ST)

OPTION A: mud-in end

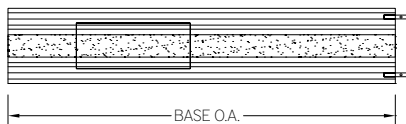


OPTION B: dead end



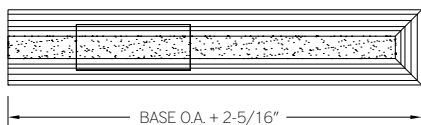
### Adder Fixture (AD)

OPTION A: adder



### Terminator Fixture (TR)

OPTION A: mud-in end



OPTION B: dead end

