

# BLT215 | GENERAL INFORMATION



3-1/8" wide steel rectilinear LED fixture with drop down lens

Project: \_\_\_\_\_ Type: \_\_\_\_\_



## FEATURES

The BLT215 luminaire provides high performance with high value. The heavy gauge, sheet formed steel housing is offered in a 3-1/8" x 4" rectangular profile with a three-sided frosted acrylic lens. Multiple driver, light output and mounting options enable this basic linear fixture to provide great versatility in applications.

## SPECIFICATIONS

Housing is formed and welded, 20 ga. steel, chemically treated to resist corrosion and enhance paint adhesion

Model variations offered for surface and cable suspended applications

Standard finishes as shown below

Available as single fixtures in nominal lengths of 2'-8'

Surface mount models include knock outs on the rear and surface or suspended models are available with optional end knock outs.

Standard integral 120-277V driver offered with 0-10V dimming or non-dim (other dimming driver options available)

Integral 120-277V emergency battery backup available for 4' nominal non-dim or 0-10V (consult factory for all other lengths/drivers)

Standard light outputs are 600, 840 or 1135 lumens per foot

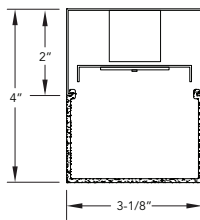
LEDs available in 3000K, 3500K, 4000K, 5000K, within a 3 step MacAdam ellipse, all with 80+ CRI typical

Life: 50,000 hours L<sub>70</sub>

Passive infrared occupancy sensor available

Limited five year warranty

## SECTION



PERFORMANCE	NOMINAL LENGTH	OUTPUT	LUMENS/ft.	WATTS/ft.	LUMINAIRE LUMENS	EFFICACY (LPW)
		45"	L: low	600	5.0	2177
		R: regular	840	7.8	3100	108
		H: high	1135	11.1	4189	102

\*Note: All data reflects fixtures with 3500K LEDs



## BLT215 -

FIXTURE LENGTH	CORRELATED COLOR TEMPERATURE	DRIVER	LIGHT OUTPUT (lumens per foot)	LENS	OPTIONS	MOUNT	FINISH
2: 22-5/16"	30: 3000K-80+ CRI	<b>[Non-Dimming]</b> leave blank for non-dimming	L: low - 600	A: rectangular lens profile	EK: add end knock-outs	SM: surface mount	AW: architectural white (semi-matte)
3: 33-5/16"	35: 3500K-80+ CRI	<b>[Dimming]</b> D: 0-10V, 1%	R: regular - 840		ED: emergency driver (4' nom. non-dim or 0-10V only)	C4: cable mount 4' cable length	WH: white (semi-gloss)
4: 44-5/16"	40: 4000K-80+ CRI	HE: Lutron EcoSystem, 1%	H: high - 1135		S1: occ sensor pos.1 (see options section)	C8: cable mount 8' cable length	BL: black (semi-matte)
5: 55-5/16"	50: 5000K-80+ CRI	HES: Lutron EcoSystem, soft-on/fade-to-black, 1%	CF: consult factory		S2: occ sensor pos.2 (see options section)	CF: consult factory for custom mounting	MB: matte black
6: 66-5/16"		H2: Lutron Hi-lume 2-wire forward phase, 1%, (120V ONLY)			S3: occ sensor pos.3 (see options section)		ESS: environmental satin silver
7: 77-5/16"		E5: Lutron EcoSystem 5-Series, 5%					BZ: bronze
8: 88-5/16"		EL: eldoLED ECOdrive, 0-10V, 1%					PR: primer
							CF: consult factory for custom finish

LENS

ORDERING CODE	DESCRIPTION	SPECIFICATIONS
	A RECTANGULAR ACRYLIC	Frosted acrylic extrusion with rectangular profile

OPTIONS

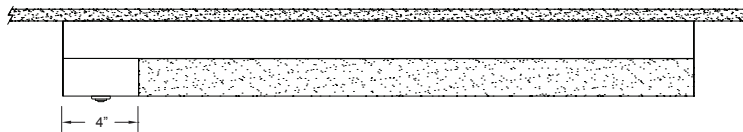
ORDERING CODE	DESCRIPTION	SPECIFICATIONS
EK	ADD END KNOCK OUTS	Ø 7/8" knock outs added at both fixture ends
ED	EMERGENCY LED DRIVER	<ul style="list-style-type: none"> <li>• Universal 120-277V input voltage emergency driver delivers initial minimum power of 10W for 90 minutes</li> <li>• Available for 4' nominal length non-dim or 0-10V fixture only (consult factory for all other lengths/drivers)</li> </ul>

OCCUPANCY SENSOR

Passive infrared occupancy sensor with hold-off daylighting adjustment (10-120 foot candles) and time delay adjustment from 30 seconds to 30 minutes  
Sensor adds 4" to overall fixture length

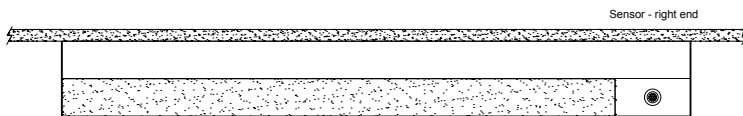
S1 OCCUPANCY SENSOR - POSITION 1

Sensor located on the top at an end



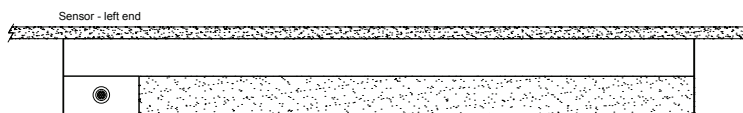
S2 OCCUPANCY SENSOR - POSITION 2

Sensor located on the side at the **right** end



S3 OCCUPANCY SENSOR - POSITION 3

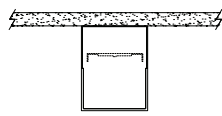
Sensor located on the side at the **left** end



MOUNTING

ORDERING CODE

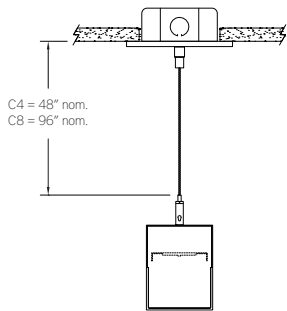
DESCRIPTION



SM

SURFACE MOUNT

Use appropriate fastener through  $\varnothing 3/16"$  holes in housing



C4 and C8

CABLE MOUNT

Mounting option includes:

- $\varnothing 1/16"$  x 48" (C4) or 96" (C8) aircraft cables
- 60" (C4) or 108" (C8) power cable (in coordinating finish)
- Bracket bars
- $\varnothing 5"$  white canopies
- Ceiling couplers
- Side exit cable grippers