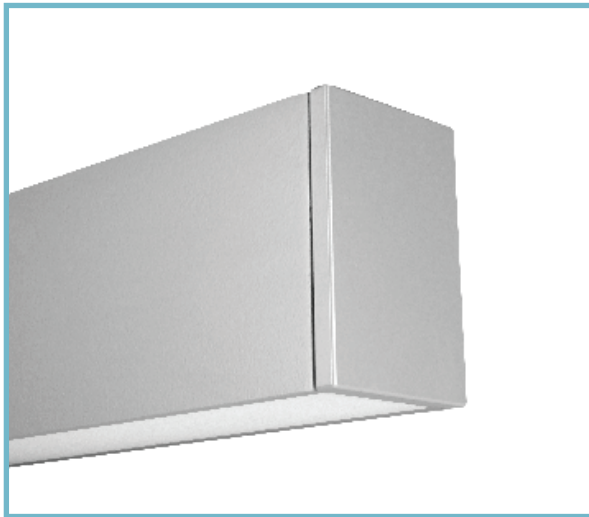


# BSS208 | BODHI GENERAL INFORMATION



Rectilinear LED luminaire with flush lens

Project: \_\_\_\_\_ Type: \_\_\_\_\_



## FEATURES

The BSS208 is a linear LED luminaire for general lighting applications. The 2" wide by 3" tall extrusion is fitted with a flush, frosted lens and machined aluminum end caps. Surface, cable or wall mounting options are available, as well as a variety of dimming drivers and light outputs, to maximize the versatility of this clean design luminaire.

## SPECIFICATIONS

Fixture constructed of an extruded aluminum housing, extruded, frosted acrylic lens and machined aluminum end caps

Model variations offered for surface, wall mount and cable suspended applications

Standard finishes as shown below

Available in nominal lengths of 2'-8' single fixtures and continuous runs

Basic continuous run fixtures provided with 18 ga. wiring harness for 6 Amp maximum load (consult factory for runs requiring multiple circuits, sensor integration, etc.)

Standard integral 120-277V driver offered with 0-10V dimming or non-dim (other dimming driver options available)

Integral 120-277V emergency battery backup available for 4' nominal non-dim or 0-10V (consult factory for all other lengths/drivers)

Standard light outputs are 450, 580 and 760 lumens per foot LEDs available in 2700K, 3000K, 3500K and 4000K, within a 3 step MacAdam ellipse, all with 90+ CRI typical

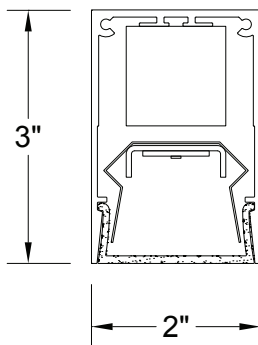
Passive infrared occupancy sensor available

Life: 50,000 hours L70

UL and C-UL listed for dry and damp locations

Limited five year warranty

## SECTION



## PERFORMANCE

NOMINAL LENGTH	OUTPUT	LUMENS/ft.	WATTS/ft.	LUMINAIRE LUMENS	EFFICACY (LPW)
4'	L: low	450	5.6	1666	79
	R: regular	580	7.8	2164	75
	H: high	760	10.8	2843	70

\*Note: All data reflects fixture with 3500K LEDs



## BSS208 -

**NOMINAL FIXTURE LENGTH\*\***  
 2: 22-5/8"  
 3: 33-5/8"  
 4: 44-5/8"  
 5: 55-5/8"  
 6: 66-5/8"  
 7: 77-5/8"  
 8: 88-5/8"

**CORRELATED COLOR TEMPERATURE**  
 27: 2700K-90+ CRI  
 30: 3000K-90+ CRI  
 35: 3500K-90+ CRI  
 40: 4000K-90+ CRI

**DRIVER**  
 ND: non-dimming  
**[Dimming]**  
 DM: 0-10V, 1%  
 HE: Lutron EcoSystem 1%  
 HES: Lutron EcoSystem, soft-on/fade-to-black, 1%  
 H2: Lutron Hi-lume 2-wire forward phase, 1%, (120V ONLY)  
 E5: Lutron EcoSystem 5-Series, 5%  
 EL: eldoLED ECOdrive 0-10V, 1%

**LIGHT OUTPUT (lumens per foot)**  
 L: low - 450  
 R: regular - 580  
 H: high - 760  
 CF: consult factory for custom output

**MOUNT**  
 SM: surface mount  
 WD: wall mount - direct  
 WI: wall mount - indirect  
 C4: cable mount 4' cable length  
 C8: cable mount 8' cable length

**RUN CONFIGURATION**  
 SN: single  
 ST: starter  
 AD: adder  
 TR: terminator

**OPTIONS**  
 ED: emergency driver (4' non-dim or 0-10V only)  
 S1: occ sensor pos.1 (see options section)

**FINISH**  
 AW: architectural white (semi-matte)  
 WH: white (semi-gloss)  
 BL: black (semi-matte)  
 MB: matte black  
 ESS: environmental satin silver  
 BZ: bronze  
 PR: primer  
 CF: consult factory for custom finish  
 SA: satin anodize (may require additional lead time)

\*\* Actual dimension dependent on run configuration and sensor option

OPTIONS

ORDERING CODE	DESCRIPTION	SPECIFICATIONS
ED	EMERGENCY LED DRIVER	<ul style="list-style-type: none"> <li>• Universal 120-277V input voltage emergency driver delivers initial minimum power of 10W for 90 minutes</li> <li>• Available for 4' nominal length non-dim or 0-10V fixture only (consult factory for all other lengths/drivers)</li> </ul> <p><b>Note: remote battery backup available for shorter fixture lengths - ordered separately, consult factory for details</b></p> <ul style="list-style-type: none"> <li>• Indicator/test switch located on the top for C4/C8 mount and on the side at an end for SM mount</li> </ul>
	OCCUPANCY SENSOR	<p>Passive infrared occupancy sensor with hold-off day-lighting adjustment (10-120 foot candles) and time delay adjustment from 30 seconds to 30 minutes</p> <p>Light aperture length reduced by 4"</p>
S1	OCCUPANCY SENSOR - POSITION 1	Sensor located on underside at an end

## MOUNTING

	ORDERING CODE	DESCRIPTION
	SM	<p>SURFACE MOUNT</p> <p>Use appropriate fastener through <math>\varnothing 3/16"</math> holes in housing</p>
	WD	<p>WALL MOUNT – DIRECT ORIENTATION</p> <p>Mounting option includes:</p> <ul style="list-style-type: none"> <li>• 1-7/8" H x 2-1/2" W aluminum bracket projects the fixture housing 3/4:" from the wall surface</li> </ul>
	WI	<p>WALL MOUNT – INDIRECT ORIENTATION</p> <p>Mounting option includes:</p> <ul style="list-style-type: none"> <li>• 1-7/8" H x 2-1/2" W aluminum bracket projects the fixture housing 3/4:" from the wall surface</li> </ul>
	C4 and C8	<p>CABLE MOUNT</p> <p>Mounting option includes:</p> <ul style="list-style-type: none"> <li>• <math>\varnothing 1/16"</math> x 48" (C4) or 96" (C8) aircraft cables</li> <li>• 60" (C4) or 108" (C8) power cable (in coordinating finish)</li> <li>• Bracket bars</li> <li>• <math>\varnothing 5"</math> white canopies</li> <li>• Ceiling couplers</li> <li>• Side exit cable grippers</li> </ul>