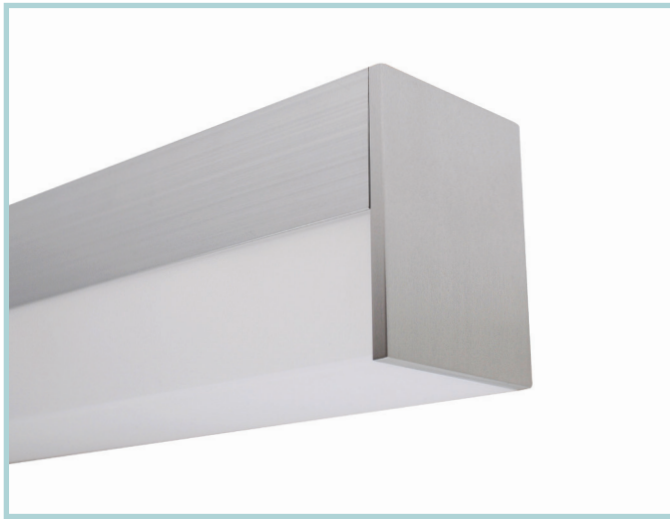


3-1/8" wide rectilinear LED fixture with drop down lens for outdoor application

Project: _____ Type: _____



FEATURES

The BSW215 is a linear LED luminaire for outdoor lighting applications. The 3-1/8" wide extruded aluminum housing is capped by a 2" tall, frosted, three sided lens that produces a wide distribution of diffuse illumination. 1/4" thick machined aluminum end caps finish off the fixture ends.

SPECIFICATIONS

Fixture constructed of an extruded aluminum, extruded, frosted acrylic lens and machined aluminum end caps

Standard finishes as shown below

Available in nominal lengths of 2'-8' single fixtures and continuous runs

Housing provided with a Ø7/8 hole for back feeding

Standard integral 120-277V non-dimming driver offered

Performance data pending lab tests

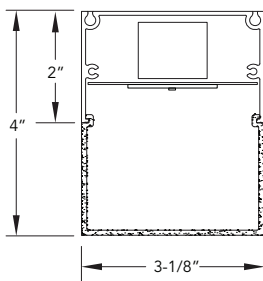
LEDs available in 3000K, 3500K and 4000K, within a 3 step MacAdam ellipse, all with 80+ CRI typical

Life: 50,000 hours L70

Limited five year warranty

UL and C-UL listed for wet locations

SECTION



BSW215 -

NOMINAL FIXTURE LENGTH*

- 2: 23-3/4"
- 3: 35-1/8"
- 4: 46-5/8"
- 5: 58"
- 6: 69-3/8"
- 7: 80-3/4"
- 8: 92-1/8"

CORRELATED COLOR TEMPERATURE

- 30: 3000K-80+ CRI
- 35: 3500K-80+ CRI
- 40: 4000K-80+ CRI

DRIVER

IN: non-dimming

LIGHT OUTPUT (lumens per foot)

- L: low
- R: regular
- H: high

MOUNT

SM: surface mount
CF: consult factory for custom mounting

RUN CONFIGURATION

- SN: single
- ST: starter
- AD: adder
- TR: terminator

FINISH

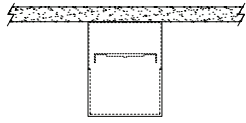
- AW: architectural white (semi-matte)
- WH: white (semi-gloss)
- BL: black (semi-matte)
- MB: matte black
- ESS: environmental satin silver
- BZ: bronze
- PR: primer
- CF: consult factory for custom finish

* Actual dimension dependent on run configuration

MOUNTING

ORDERING CODE

DESCRIPTION



SM

SURFACE MOUNT

- Use appropriate fastener through $\varnothing 3/16$ " holes in housing
- Power entry through $\varnothing 7/8$ hole on the back at an end