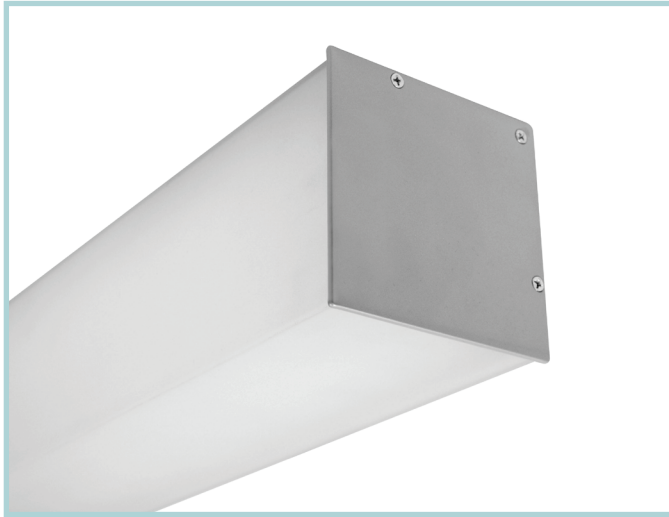


4-1/4" square corner mount LED fixture for outdoor applications

Project: _____ Type: _____



FEATURES

The BSW755 is a corner mount, linear LED luminaire well suited for outdoor lighting. The 4-1/4" x 4-1/4" extruded aluminum housing tucks into architectural junctures and fitted with a two-sided, frosted acrylic lens. When installed, virtually no fixture housing is visible, leaving the evenly illuminated lens to make a strong visual statement.

SPECIFICATIONS

Fixture constructed of an extruded aluminum housing, frosted, extruded acrylic lens and sheet aluminum end caps

Standard finishes as shown below

Available in nominal lengths of 2'-8" single fixtures and continuous runs

Housing provided with a Ø7/8 hole for back feeding

Standard integral 120-277V non-dimming driver offered

Performance data pending lab tests

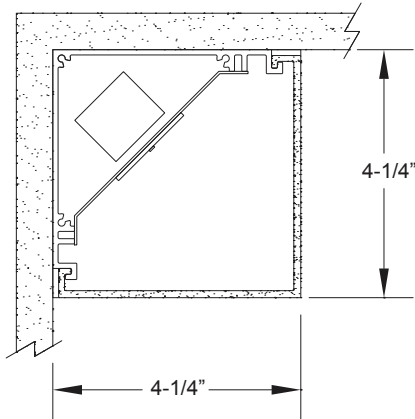
LEDs available in 3000K, 3500K, and 4000K, within a 3 step MacAdam ellipse, all with 80+ CRI typical

Life: 50,000 hours L70

Limited five year warranty

UL and C-UL listed for wet locations

SECTION



BSW755 -

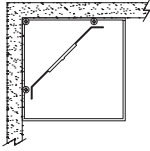
NOMINAL FIXTURE LENGTH** 2: 23-1/2" 3: 34-7/8" 4: 46-3/8" 5: 57-3/4" 6: 69-1/8" 7: 80-1/2" 8: 91-7/8"	CORRELATED COLOR TEMPERATURE 30: 3000K-80+ CRI 35: 3500K-80+ CRI 40: 4000K-80+ CRI	DRIVER IN: non-dimming	LIGHT OUTPUT L: low R: regular H: high	MOUNT SM: surface mount CF: consult factory for custom mounting	RUN CONFIGURATION SN: single ST: starter AD: adder TR: terminator	FINISH AW: architectural white (semi-matte) WH: white (semi-gloss) BL: black (semi-matte) MB: matte black ESS: environmental satin silver BZ: bronze PR: primer CF: consult factory for custom finish
---	--	----------------------------------	--	--	--	--

** Actual dimension dependent on mounting option and run configuration

MOUNTING

ORDERING CODE

DESCRIPTION



SM

SURFACE MOUNT

- Use appropriate fastener through $\text{Ø}3/16$ " holes in housing
- Power entry through $\text{Ø}7/8$ hole on the back at an end