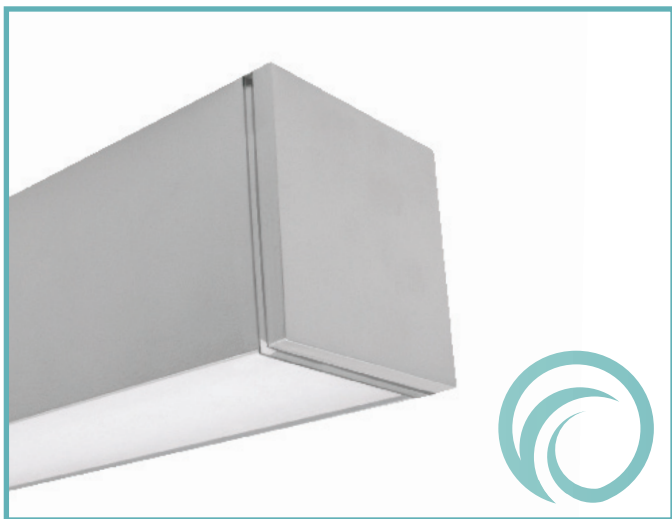


3" square rectilinear LED fixture with flush lens for outdoor application

Project: \_\_\_\_\_ Type: \_\_\_\_\_



### FEATURES

The BSW214 is a linear LED luminaire for outdoor lighting applications. The 3" square extrusion is fitted with a flush, frosted lens and machined aluminum end caps.

### SPECIFICATIONS

Fixture constructed of an extruded aluminum, extruded, frosted acrylic lens and machined aluminum end caps

Standard finishes as shown below

Available in nominal lengths of 2'-8' single fixtures and continuous runs

Housing provided with a Ø7/8 hole for back feeding

Standard integral 120-277V wet location driver offered with 0-10V dimming or non-dim

Performance data pending lab tests

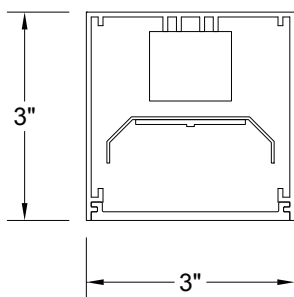
LEDs available in 3000K, 3500K and 4000K, within a 3 step MacAdam ellipse, all with 80+ CRI typical

Life: 50,000 hours L70

Limited five year warranty

UL and C-UL listed for wet locations

### SECTION



### BSW214 -

#### NOMINAL FIXTURE LENGTH\*

- 2: 23-3/4"
- 3: 35-1/8"
- 4: 46-5/8"
- 5: 58"
- 6: 69-3/8"
- 7: 80-3/4"
- 8: 92-1/8"

#### CORRELATED COLOR TEMPERATURE

- 30: 3000K-80+ CRI
- 35: 3500K-80+ CRI
- 40: 4000K-80+ CRI

#### DRIVER

- IN: non-dimming
- ID: 0-10V dimming, 5%

#### LIGHT OUTPUT (lumens per foot)

- L: low
- R: regular
- H: high

#### MOUNT

- SM: surface mount
- CF: consult factory for custom mounting

#### RUN CONFIGURATION

- SN: single
- ST: starter
- AD: adder
- TR: terminator

#### FINISH

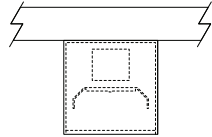
- AW: architectural white (semi-matte)
- WH: white (semi-gloss)
- BL: black (semi-matte)
- MB: matte black
- ESS: environmental satin silver
- BZ: bronze
- PR: primer
- CF: consult factory for custom finish

\* Actual dimension dependent on run configuration

MOUNTING

ORDERING CODE

DESCRIPTION



SM

SURFACE MOUNT

- Use appropriate fastener through Ø3/16" holes in housing
- Power entry through Ø7/8 hole on the back at an end

EPA CALCULATIONS

LENGTH ORDERING CODE	EPA
2	0.99 ft <sup>2</sup>
3	1.46 ft <sup>2</sup>
4	1.94 ft <sup>2</sup>
5	2.42 ft <sup>2</sup>
6	2.89 ft <sup>2</sup>
7	3.36 ft <sup>2</sup>
8	3.84 ft <sup>2</sup>