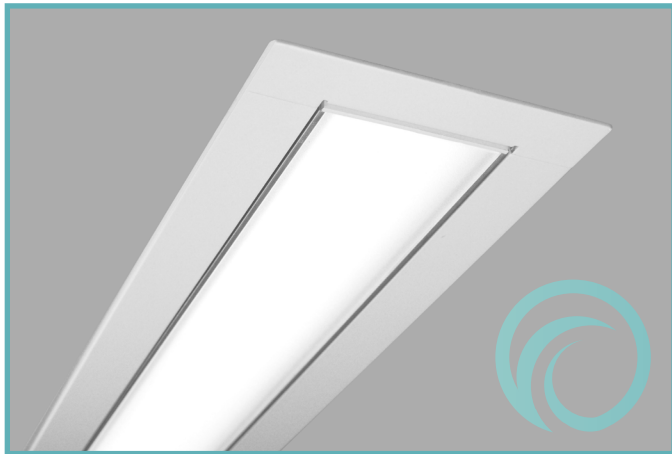


2" wide aperture linear recessed LED fixture for outdoor applications

Project: \_\_\_\_\_ Type: \_\_\_\_\_



### FEATURES

BSW420 is a recessed linear LED luminaire with 2" wide aperture for outdoor lighting applications. Single and continuous run fixtures are available for installation in exterior ceilings. Flush or 1" drop frosted acrylic lens options are offered.

### SPECIFICATIONS

Fixture housing and trim elements made of extruded aluminum and 16 ga. sheet metal parts

Fixture available with flange trim for mounting in ceiling installations

Available in nominal lengths of 2'-8' single fixtures and continuous runs

Lens options include frosted acrylic flush fit, 1" drop style with lensed ends

Standard integral 120-277V wet location driver offered with 0-10V dimming or non-dim

Standard outputs range from 345 – 925 lumens per foot with the flush lens option

LEDs available in 2700K, 3000K, 3500K, and 4000K, within a 3 step MacAdam ellipse, all with 80+ CRI typical

Life: 50,000 hours L<sub>70</sub>

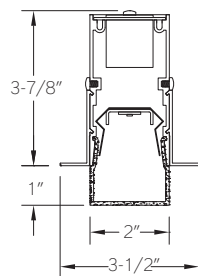
Nominal weight is 2.8 lbs. per foot

Limited five year warranty

UL listing pending

### SECTIONS

FT: Flange  
(drop lens option shown)



### PERFORMANCE

NOMINAL LENGTH	LENS	OUTPUT	LUMENS/ft.	WATTS/ft.	LUMINAIRE LUMENS	EFFICACY (LPW)
45"	FLUSH	L: low	345	4.0	1382	87
		R: regular	690	8.0	2759	86
		H: high	925	10.7	3694	87

Note: All data reflects fixtures with 3500K LEDs and flush lens option



### BSW420 -

**MOUNTING**  
FT: Flange trim

**NOMINAL FIXTURE LENGTH\***  
2: 24"  
3: 36"  
4: 48"  
5: 60"  
6: 72"  
7: 84"  
8: 96"

**CORRELATED COLOR TEMPERATURE**  
27: 2700K-80+ CRI  
30: 3000K-80+ CRI  
35: 3500K-80+ CRI  
40: 4000K-80+ CRI

**DRIVER**  
IN: non-dimming  
ID: 0-10V dimming, 5%

**LIGHT OUTPUT (lumens per foot w/flush lens)**  
L: low - 345  
R: regular - 690  
H: high - 925

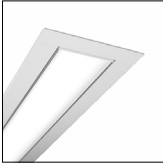
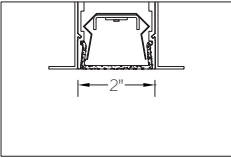

**RUN CONFIGURATION**  
SN: single  
ST: starter  
AD: adder  
TR: terminator

**OPTIONS**  
CF: consult factory for custom flange trim finish

**LENS**  
F1: frosted flush  
F2: frosted drop

\* Actual dimension dependent on run configuration

LENS OPTIONS

	ORDERING CODE	DESCRIPTION	SPECIFICATIONS	
 <p>shown with flange trim option</p>	F1	FROSTED FLUSH LENS	2" W frosted acrylic extrusion	
 <p>shown with flange trim option</p>	F2	FROSTED DROP LENS	2" W x 1" H frosted acrylic extrusion with matching acrylic end caps	