

3" wide aperture linear recessed LED fixture for outdoor applications

Project: _____ Type: _____



FEATURES

BSW430 is a recessed linear LED luminaire with 3" wide aperture for outdoor lighting applications. Single and continuous run fixtures are available for installation in exterior ceilings. Flush or 1" drop frosted acrylic lens options are offered.

SPECIFICATIONS

Fixture housing and trim elements made of extruded aluminum and 16 ga. sheet metal parts

Fixture available with flange trim for mounting in ceiling installations

Available in nominal lengths of 2'-8' single fixtures and continuous runs

Lens options include frosted acrylic flush fit, 1" drop style with lensed ends

Standard integral 120-277V wet location driver offered with 0-10V dimming or non-dim

Standard outputs range from 390 – 1000 lumens per foot with the flush lens option

LEDs available in 2700K, 3000K, 3500K, and 4000K, within a 3 step MacAdam ellipse, all with 80+ CRI typical

Life: 50,000 hours L₇₀

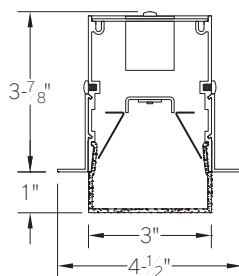
Nominal weight is 3.1 lbs. per foot

Limited five year warranty

UL listing pending

SECTIONS

FT: Flange
(drop lens option shown)



PERFORMANCE

NOMINAL LENGTH	OPTIC CONFIGURATION	OUTPUT	LUMENS/ft.	WATTS/ft.	LUMINAIRE LUMENS	EFFICACY (LPW)
45"	FLUSH	L: low	390	4.0	1554	98
		R: regular	775	8.0	3104	97
		H: high	1000	10.3	3995	97

Note: All data reflects fixtures with 3500K LEDs and flush lens option



BSW430 -

MOUNTING
FT: Flange trim

NOMINAL FIXTURE LENGTH*
2: 24"
3: 36"
4: 48"
5: 60"
6: 72"
7: 84"
8: 96"

CORRELATED COLOR TEMPERATURE
27: 2700K-80+ CRI
30: 3000K-80+ CRI
35: 3500K-80+ CRI
40: 4000K-80+ CRI

DRIVER
IN: non-dimming
ID: 0-10V dimming, 5%

LIGHT OUTPUT (lumens per foot w/flush lens)
L: low - 390
R: regular - 775
H: high - 1000

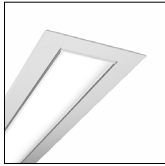
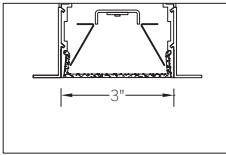

RUN CONFIGURATION
SN: single
ST: starter
AD: adder
TR: terminator

OPTIONS
CF: consult factory for custom flange trim finish

LENS
F1: frosted flush
F2: frosted drop

* Actual dimension dependent on run configuration

LENS OPTIONS

	ORDERING CODE	DESCRIPTION	SPECIFICATIONS	
 <p data-bbox="147 474 310 491">shown with flange trim option</p>	F1	FROSTED FLUSH LENS	3" W frosted acrylic extrusion	
 <p data-bbox="147 690 310 707">shown with flange trim option</p>	F2	FROSTED DROP LENS	3" W x 1" H frosted acrylic extrusion with matching acrylic end caps	