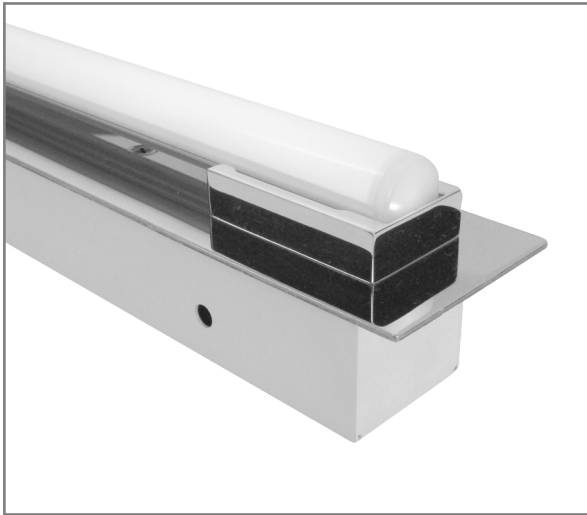


# BL6200 | GENERAL INFORMATION

Semi-recessed luminaire for use with Seamlessline LED lamp

Project: \_\_\_\_\_ Type: \_\_\_\_\_



## FEATURES

The BL6200 is a clean, sheet formed, semi-recessed luminaire, designed to enhance the qualities of the Seamlessline LED lamp. With the fixture housing recessed into a wall or ceiling cavity, only the lamp and a flat trim plate are visible. The fixture is offered in a broad range of standard powder coat and stainless steel finishes and manufactured in 3'-8' nominal lengths for all available sizes of the proprietary tubular LED source. The integral driver is available with non-dim or 0-10V dimming control.

## SPECIFICATIONS

Fixture housing is formed and welded, 20 ga. steel, chemically treated to resist corrosion and enhance paint adhesion

A 16 ga. trim plate is fitted with machined aluminum lamp socket covers

Standard finishes as shown below

Available for 34", 40", 50" and 60" nominal length Nippo Seamlessline LED lamp in single fixture, continuous run and some tandem configurations

Basic continuous run fixtures provided with 18 ga. wiring harness for 6 Amp maximum load

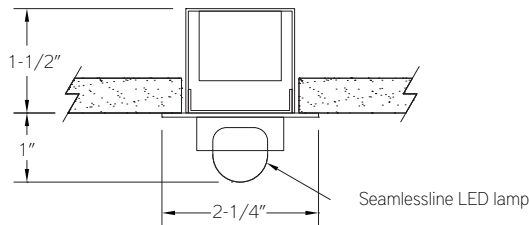
Standard, integral 120-277V driver offered with 0-10V dimming or non-dim

Seamlessline LED lamps ordered separately – see supplementary lamp info. sheet for details

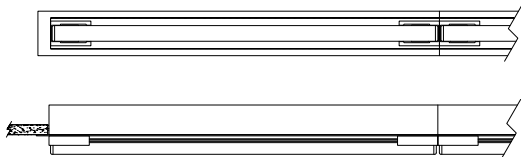
Limited five year warranty

UL listing pending

## SECTION



## PLAN / SIDE



## PERFORMANCE

NOMINAL LENGTH	LUMENS/ft.	WATTS/ft.	LUMINAIRE LUMENS	EFFICACY
50"	410	5.5	1730	75

Note: All data reflects fixture with 3500K Seamlessline LED lamp



## BL6200 -

### NOMINAL FIXTURE LENGTH\*

34: 34-3/4"  
40: 40-11/16"  
50: 50-9-16"  
60: 60-3/8"  
4040: 80-3/32"  
5050: 99-7/8"

### DRIVER

ND: non-dimming  
D: dimming 0-10V, 6%

### MOUNT

RE: recessed mount  
CF: consult factory for custom mounting

### RUN CONFIGURATION

SN: single  
ST: starter  
AD: adder  
TR: terminator

### FINISH

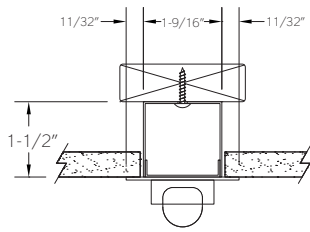
AW: architectural white (semi-matte)  
WH: white (semi-gloss)  
BL: black (semi-matte)  
MB: matte black  
ESS: environmental satin silver  
BZ: bronze  
PR: primer  
S4: #4 brushed stainless steel  
S8: #8 polished stainless steel  
CF: consult factory for custom finish

\* Actual dimension dependent on run configuration

## MOUNTING

ORDERING CODE

DESCRIPTION



RE

SEMI-RECESSED

Use appropriate fastener through  $\text{Ø}3/16''$  holes in housing into blocking